

## NARRATIVE INFORMATION -- DA 400

DIVISION OF THE BUDGET  
STATE OF KANSAS

AGENCY NAME	Kansas Racing and Gaming Commission	
AGENCY NUMBER	553	Function No 1
PROGRAM TITLE AND CODE	Agency-Wide Overview	
SUBPROGRAM TITLE AND CODE		

September 12, 2025

Adam Proffitt, Director of Budget  
Division of the Budget  
Suite 504, Landon State Office Building  
900 SW Jackson  
Topeka, KS 66612

Dear Director Proffitt:

As Executive Directors of the Kansas Racing and Gaming Commission (KRGK), and the Kansas State Gaming Agency (KSGA), we hereby submit for your consideration the Fiscal Year 2026, and Fiscal Year 2027 budget document for the KRGK and KSGA.

As always, we and our staff are prepared to provide any additional information which you or our budget analyst may require.

Sincerely,



Donald Brownlee  
Executive Director  
Kansas Racing and Gaming Commission

<b>NARRATIVE INFORMATION -- DA 400</b>		AGENCY NAME		Kansas Racing and Gaming Commission	
DIVISION OF THE BUDGET STATE OF KANSAS		AGENCY NUMBER		553	FUNCTION NO. 1
		PROGRAM TITLE AND CODE			
		SUBPROGRAM TITLE AND CODE			
<div>Table of Contents</div> <div><div>General Agency Information - DA 400 Explanation of Receipt Estimates - DA 405 Racing Program     Program Narrative Information - DA 400 Tribal Gaming Program     Program Narrative Information - DA 400 Expanded Lottery Act Regulation Program     Program Narrative Information - DA 400 Organization Charts</div><div>2 8  16  21  27 39</div></div>					

## NARRATIVE INFORMATION -- DA 400

DIVISION OF THE BUDGET  
STATE OF KANSAS

AGENCY NAME	Kansas Racing and Gaming Commission	
AGENCY NUMBER	553	Function 1
PROGRAM TITLE AND CODE	Agency-Wide Overview	
SUBPROGRAM TITLE AND CODE		

### **KRGC Mission**

The Kansas Racing and Gaming Commission (KRGC) is dedicated to protecting the integrity of racing and gaming in Kansas through enforcement of Kansas laws and regulations, and is committed to preserving and instilling public trust and confidence.

### **KRGC Philosophy**

The KRGC approaches its duties with a dedicated sense of purpose and responsibility in service to the public in order to maintain the integrity of gaming, to ensure accountability and compliance with gaming regulations, to educate the public concerning illegal and unregulated gaming operations, to educate operators and the public about responsible gambling practices, and to protect the health, safety and welfare of animals racing at licensed Kansas racetracks.

### **Programs Established to Assist with KRGC Mission**

03800 - Expanded Lottery Act Regulation Program  
03900 – Racing Program

### **Programs Established to Assist with State Gaming Agency Goals and Objectives (see Tribal Gaming Program narrative for details)**

03700 – Tribal Gaming Program

### **KRGC Statutory History**

In 1986, Article 15, Section 3 of the Kansas Constitution was amended by Kansas voters to permit pari-mutuel wagering on horse and greyhound races. The Kansas Pari-mutuel Racing Act was enacted by the Kansas Legislature in 1987 setting forth the terms and conditions of the agency's operation as enumerated in Chapter 74, Article 88 of the Kansas Statutes Annotated (KSA). The powers and duties of the Kansas Racing Commission, as it was originally named, may be found in K.S.A. 74-8804, as amended. In 1996, the Kansas Racing Commission was renamed the Kansas Racing and Gaming Commission (KRGC) pursuant to K.S.A. 74-8803a. In 2022, the Kansas Pari-mutuel Racing Act was amended to authorize the operation of historical horse race machines by an organization licensee at a facility located in Sedgwick County utilizing only historical horse race machines approved by KRGC. Wagering on historical horse racing machines is required to be conducted in accordance with the provisions of the Kansas Pari-mutuel Racing Act.

In 2007, the Kansas Legislature enacted the Kansas Expanded Lottery Act (KELA), which is found in K.S.A. 74-8733 through 74-8773. Under KELA, the Kansas Lottery is authorized to own and operate casino-style games, including slot machines and table games, in specified geographical gaming zones, as well as pari-mutuel racetrack facilities located within certain of those gaming zones. The KRGC, under KELA, regulates and licenses lottery and racetrack gaming facility managers under contract with the Kansas Lottery to operate the games owned by the Kansas Lottery. In addition, the KRGC licenses gaming and non-gaming suppliers used by lottery or racetrack gaming facility managers. In 2022, KELA was amended to allow the conduct of sports wagering by lottery gaming facilities. The amendment expanded KRGC's oversight of lottery gaming facility games to include regulation of sports wagering.

### **State Gaming Agency Executive and Statutory History**

In 1995, the State of Kansas by Executive Order No. 95-177 designated the Kansas Department of Commerce & Housing as the State Gaming Agency to carry out certain duties and responsibilities under the gaming compacts entered into with resident Native American tribes until the Kansas Legislature could enact legislation to designate a permanent State Gaming Agency.

In 1996, the Kansas Legislature enacted the Tribal Gaming Oversight Act, which is set forth in K.S.A. 74-9801 through 74-9809, as amended. Under K.S.A. 74-9803, the State Gaming Agency was attached to the KRGC for budget purposes, human resource assistance, and dispute resolution under the terms of the tribal-state gaming compacts. All other management functions of the State Gaming Agency are administered by its executive director. (See Tribal Gaming Program narrative)

In 2022, the Kansas Expanded Lottery Act was expanded to allow for the four federally recognized Indian tribes to submit a request for negotiation of a new or existing gaming compact regarding sports wagering. This would allow the four Class III tribal casinos to negotiate their Compacts to include language that would allow them to conduct sports wagering both on the tribal reservations and remotely via online sports wagering platforms.

## NARRATIVE INFORMATION -- DA 400

DIVISION OF THE BUDGET  
STATE OF KANSAS

AGENCY NAME	Kansas Racing and Gaming Commission
AGENCY NUMBER	553
PROGRAM TITLE AND CODE	Agency-Wide Overview
SUBPROGRAM TITLE AND CODE	

### KRGC/Budget Overview

#### **Background**

The passage of KELA provided for the creation of four gaming zones in which one lottery gaming facility manager would be selected. In addition, KELA authorized the operation of slot machines at pari-mutuel racetrack facilities under specific conditions. Four lottery gaming facilities have been constructed to date and are in operation in the southwest, northeast, south-central gaming, and southeast gaming zones. In 2022 KELA was expanded to allow for the four lottery gaming facility managers to conduct sports wagering both on premises and remotely via online sports wagering platforms. Additionally, no licensed pari-mutuel racetrack facilities currently exist in Kansas, but the Kansas Pari-mutuel Racing Act was revised 2022 to allow for historical horse racing machines to be utilized by a licensed parimutuel facility in Sedgwick county.

In December 2009 the Boot Hill Casino & Resort (Boot Hill Casino) began operations in Dodge City, Kansas in the southwest gaming zone. Boot Hill Casino has over 600 state-owned slot machines, 16 table games and 5 poker tables. The Boot Hill Casino is flanked on one side by the Dodge City/Ford County United Wireless events and convention center, which includes a 6,000 seat arena, and on the other side by a Hampton Inn that opened in March 2012.

In 2010, Peninsula Gaming, LLC (Peninsula) was selected as the lottery gaming facility manager for the south-central gaming zone. Peninsula constructed a temporary gaming facility known as the Kansas Star Arena Casino that opened in December 2011 in Mulvane, Kansas. The Kansas Star Casino's permanent gaming facility with several dining options opened in December 2012. A connected Hampton Inn with 150 rooms opened in November 2012 and an additional 150 hotel rooms opened in July 2014. The temporary gaming facility has been reconfigured into an entertainment facility. The convention center and the equestrian facilities were completed in January of 2015. Boyd Gaming, Inc. acquired 100% of Peninsula in an equity transaction in November 2012.

The third lottery gaming facility is located in the northeast gaming zone and opened February 2012 in Wyandotte County. The facility, known as the Hollywood Casino at Kansas Speedway (Hollywood Casino), is operated by Kansas Entertainment, LLC, which is a joint venture between Penn National Gaming, Inc. and International Speedway, Corp. International Speedway, Corp. owns and operates the Kansas Speedway and the Hollywood Casino is located on turn two of the Kansas Speedway.

The fourth lottery gaming facility, Kansas Crossing Casino, is located in the southeast gaming zone and opened in March of 2017 in Pittsburg, Kansas. The facility has 625 slot machines, 16 table games, a 123-room Hampton Inn and Suites and a 600 seat entertainment complex.

### KRGC General Assumptions

The revised FY 2026 budget is based upon the following assumptions: 1) full year of operation for Boot Hill Casino; 2) full year of operation for Kansas Star Casino; 3) full year of operation for Hollywood Casino; 4) full year of operation for Kansas Crossing Casino; 5) full year of operation of sports wagering by all four State-owned casinos; 6) full year of regulatory obligations related to the construction of a parimutuel facility in Sedgwick county expected to commence operations in December of 2025.

The submitted budget for FY 2027 is based upon the following assumptions: 1) full year of operation for Boot Hill Casino; 2) full year of operation for Kansas Star Casino; 3) full year of operation for Hollywood Casino; 4) full year of operation for Kansas Crossing Casino; 5) full year of operation of sports wagering by all four State-owned casinos; 6) full year of regulatory operations related to a parimutuel facility in Sedgwick county.

The Kansas Bred Registry Program registers Kansas bred horses in various categories for the purpose of distributing moneys credited to the Kansas horse breeding development fund. Distributions from this fund include purse supplements, stakes and awards, and equine research. The registry was previously administered under a contract that expired between the KRGC and the Kansas Horsemen's Association. It is also assumed that the KRGC will assume the responsibilities of the Kansas Greyhound Association regarding the administration of the Kansas bred greyhound registry in the future. Under current conditions funding for the maintenance of the registry programs will come from existing State Racing Funds and registration fees deposited into the State Racing Fund.

The KRGC renews its request to continue the practice of using no-limit fee funds for all funds, thus allowing the necessary flexibility to regulate racing and gaming activities as conditions change. Additionally, the KRGC has requested that the current balances in all funds related to pari-mutuel activities be maintained in the event licensed pari-mutuel racing activity resumes in Kansas and to fund the administration of the registry programs.

<b>NARRATIVE INFORMATION -- DA 400</b>	AGENCY NAME Kansas Racing and Gaming Commission
DIVISION OF THE BUDGET	AGENCY NUMBER 553
STATE OF KANSAS	PROGRAM TITLE AND CODE Agency-Wide Overview
SUBPROGRAM TITLE AND CODE  <b><u>KRGC Budget Overview (continued)</u></b>  <b>Current Year Comparison of FY 2026 Approved and Revised Budget Expenditures</b> The KRGC's revised FY 2026 budget is approximately \$11.85 million which is a slight increase above the approved FY 2026 budget of \$11.55 million. The primary reason for the increase is an enhancement request in the amount of \$100,000 for capital outlay for the regulation of historical horse racing (HHR) machines in Sedgwick county which is anticipated to open in December of 2025 the remainder of the overage can be attributed to increases for benefits and salaries and wages for enforcement agents at the HHR facility in Sedgwick to be consistent with enforcement agent salaries in other program areas within the agency. KRGC has assumed a shrinkage rate of 7.5% for FY 2026 which totals a shrinkage rate of about \$800,000. There are two programs within the budget. The expanded gaming regulation budget is approximately \$9.5 million and the parimutuel gaming program budget is approximately \$2.3 million.  The FTE for the requested FY 2026 budget is unchanged from the approved FY 2026 FTE of 105.5 FTE requested. The FTE number does not include a part-time unclassified temporary position under budget policy and procedure guidelines.  <b>Budget Year – Comparison of FY 2026 approved and requested FY 2027 Budget Expenditures</b> The KRGC's requested FY 2027 budget is \$11.8 million which is a slight increase above the approved FY 2026 budget of \$11.55 million. The increase can be attributed to a change in benefits and an increase in salary and wages for enforcement agents at the HHR facility in Sedgwick County to be consistent with enforcement agent salaries in other program areas. KRGC has assumed a shrinkage rate of 7.5% for FY 2027 which totals a shrinkage amount of approximately \$800,000. There are two programs within the budget. The expanded gaming regulation budget is approximately \$9.5 million and the parimutuel gaming program budget is approximately \$2.2 million.  The number of FTE positions requested for the FY 2027 budget is consistent with the approved FY 2026 budget of 105.5 FTE. The FTE number does not include a part-time unclassified temporary position under budget policy and procedure guidelines.	

## NARRATIVE INFORMATION -- DA 400

DIVISION OF THE BUDGET

STATE OF KANSAS

AGENCY NAME

Kansas Racing and Gaming Commission

AGENCY NUMBER

553

PROGRAM TITLE AND CODE

Agency-Wide Overview

SUBPROGRAM TITLE AND CODE

### **KRGC Budget Overview (continued)**

#### **KRGC Revenues**

All expenditures by the KRGC are currently paid by the lottery gaming facility managers with the exception of costs associated with the licensing of vendors who pay their own costs. Expenditures are allocated between direct and indirect costs with direct costs being those expenditures identified with a specific lottery gaming facility manager, which primarily includes the cost of the KRGC staff located at each lottery gaming facility. Direct costs account for 65% of total costs. The remaining 35% of total costs are indirect costs that are primarily associated with the Topeka office, and are generally allocated among the lottery gaming facility managers based upon a number of factors (i.e. revenues, direct expenses, number of slot machines and table games, number of employees, etc.). In order for the KRGC to be completely self-funded it bills the lottery gaming facility managers quarterly in advance based upon approved budget expenditures. The first quarterly billings were for six months each to establish the necessary cash balances for ongoing operations. Currently, the KRGC bills for the quarter representing 4-6 months in the future and reconciles quarterly billings to actual expenditures for the quarter just ended making the necessary adjustments to the quarterly billing.

The lottery gaming facility managers also remit payments to cover the cost of the background investigations of their employees. As noted above, certain vendors doing business with lottery gaming facility managers also remit payments to cover the cost of their background investigations. Up front deposits are required based upon an estimate of the total background cost and are supplemented with additional payments if the amount of the deposit is insufficient to cover the actual costs incurred as the background investigation progresses. If the payments received exceed the background costs incurred, the vendor is sent a refund of the unused funds.

### **Review of KRGC Prior Year - 2025**

#### **Racing Program**

KRGC expenditures for FY 2025 of approximately \$170,000 were for regulation of parimutuel wagering and were predominately for salaries and wages, primarily as the result of backgrounding and regulatory activities for a parimutuel facility in Sedgwick County.

#### **Expanded Lottery Act Gaming Program**

KRGC expenditures for FY 2025 reflect the costs of ongoing regulatory oversight for Boot Hill Casino & Resort, Kansas Star Casino, Hollywood Casino at Kansas Speedway, and Kansas Crossing Casino. Total actual FY 2025 expenditures were approximately \$1 million or 10% below budget at approximately \$8.6 million compared to budgeted expenditures of about \$9.6 million. The primary reason for savings was related to salaries and wages for unfilled positions.

**NARRATIVE INFORMATION -- DA 400**

AGENCY NAME Kansas Racing and Gaming Commission

AGENCY NUMBER 553

DIVISION OF THE BUDGET

PROGRAM TITLE AND CODE Agency-Wide Overview

STATE OF KANSAS

SUBPROGRAM TITLE AND CODE

**Agency Wide Overview of Current Year Estimate and Budget Year Scenarios****Current Year - 2026****Racing Program**

The budget is built on the assumptions that 1) there will be a full year of regulatory activity related to the construction and startup operations of a parimutuel facility in Sedgwick County; 2) KRGC staff will administer to the Kansas Bred Registry Program in FY 2026. The budget is slightly increased at approximately \$2.3 million above the approved FY 2026 budget of approximately \$1.4 million. The increase is attributable to an enhancement request of \$100,000 in capital outlay for the anticipated opening expenditures for the HHR facility in Sedgwick County. Additionally, in effort to be transparent, KRGC has allocated \$700,000 of central office expenditures from the expanded lottery gaming regulation program to the parimutuel gaming program. These are not new expenditures merely an equitable distribution of central office expenditures across programs.

**Tribal Gaming Program**

The budget for the current fiscal year remains unchanged from the approved budget.

**Expanded Lottery Act Regulation Program**

The current FY2026 budget is based upon the following assumptions: 1) full year of operation for Boot Hill Casino; 2) full year of operation for Kansas Star Casino; 3) full year of operation for Hollywood Casino; 4) full year of operation for Kansas Crossing Casino; 5) a full year of sports wagering operations. The revised budget request for the expanded lottery regulation program is reduced by approximately \$700,000 of total expenditures. These are central office expenses that are reallocated from the expanded lottery regulation program to the parimutuel gaming program to properly and transparently distribute central office expenditures across programs. This is not a reduction of total agency expenditures merely an equitable distribution of central office expenditures. The total revised budget request for the expanded gaming regulation program is approximately \$9.5 million compared to the approved budget of approximately \$10.2 million.

**Enhancement Package - FY 2026****Racing Program**

The Racing Program includes an enhancement request for \$100,000 for capital outlay for the anticipated opening of a HHR facility in Sedgwick County in December 2025. The increase in capital outlay will cover costs for computers, fingerprint system, expansion of the backgrounding system, and office equipment for KRGC employees on property.

**Tribal Gaming Program**

The Tribal Gaming Program does not request any enhancement packages.

**Expanded Gaming Program**

The Expanded Gaming Program does not request any supplemental funding for the current year.

**Budget Year Information - FY 2027****Racing Program**

The budget is built on the assumptions that 1) there will be a full year of regulatory operations for parimutuel facility in Sedgwick County; 2) KRGC staff will administer the Kansas Bred Registry Program in FY 2027. The budget is reduced by a \$100,000 in capitol outlay expenditures otherwise the FY 2027 budget request is consistent with the revised FY 2026 budget request.

**Tribal Gaming Program**

The requested FY25 budget is based upon the following assumptions: 1) full year of operation for Boot Hill Casino; 2) full year of operation for Kansas Star Casino; 3) full year of operation for Hollywood Casino; 4) full a year of operation for Kansas Crossing Casino; 5)full year of sports wagering operations.

**Expanded Lottery Act Regulation Program**

The requested FY 2027 budget is based upon the following assumptions: 1) full year of operation for Boot Hill Casino; 2) full year of operation for Kansas Star Casino; 3) full year of operation for Hollywood Casino; 4) full a year of operation for Kansas Crossing Casino; 5)full year of sports wagering operations. The FY 2027 budget request is consistent with the revised FY 2026 budget request.

<b>NARRATIVE INFORMATION -- DA 400</b>		AGENCY NAME	Kansas Racing and Gaming Commission
		AGENCY NUMBER	553
DIVISION OF THE BUDGET		PROGRAM TITLE AND CODE	Agency-Wide Overview
STATE OF KANSAS		SUBPROGRAM TITLE AND CODE	
<u>Agency Wide Overview of Current Year Estimate and Budget Year Scenarios (continued)</u>  <b>Supplemental Package - FY 2027</b> <b>Racing Program</b> The Racing Program does not request any supplemental packages. <b>Tribal Gaming Program</b> The Tribal Gaming Program does not request any supplemental packages. <b>Expanded Lottery Act Regulation Program</b> The Expanded Gaming Program does not request any supplemental packages.			



**EXPLANATION OF RECEIPT ESTIMATES**

AGENCY NAME: Kansas Racing and Gaming Commission

**DA 405**DIVISION OF THE BUDGET  
STATE OF KANSASAGENCY--SUBAGENCY 553-00  
PROGRAM TITLE AND C Tribal Gaming Program - 03700  
SUBPROGRAM TITLE AND CODE:

FUNCTION NO. 01

DOB USE ONLY

**TRIBAL GAMING PROGRAM****Tribal Gaming Fund - 2320**

Revenues are based on the Legislative approved budgets and are approved and paid by the compacted tribes.

	<b>FY22</b> <b>Actuals</b>	<b>FY23</b> <b>Actuals</b>	<b>FY24</b> <b>Actuals</b>	<b>FY25</b> <b>Actuals</b>	<b>FY26</b> <b>Estimate</b>	<b>FY27</b> <b>Estimate</b>
Other Service Charges	1,416,804	1,282,806	1,298,399	1,360,621	1,574,543	1,603,585
Interchange of Gvt Employee Payroll						
Operating Transfer In	450,000	450,000	450,000	450,000	450,000	450,000
Operating Transfer Out	(450,000)	(450,000)	(450,048)	(450,048)	(451,000)	(451,000)

## EXPLANATION OF RECEIPT ESTIMATES

**DA 405**

DIVISION OF THE BUDGET  
STATE OF KANSAS

AGENCY NAME:

AGENCY--SUBAGENCY CODES:

PROGRAM TITLE AND CODE:

SUBPROGRAM TITLE AND CODE:

Kansas Racing and Gaming  
Commission

553-00

Racing Program - 03900

### RACING PROGRAM

#### State Racing Fund - 5131

K.S.A 74-8826 established the State Racing Fund. All taxes on pari-mutuel wagering, admission tax, application fees and fines must be credited to the fund. The Racing Program is currently on hold as all tracks in the State have ceased operations.

This budget assumes there will be a single racetrack in Sedgwick County operating historical horse racing machines to generate revenues and expenditures to this fund in FY 2026. The estimated revenues projected in FY 2026, and FY 2027 are attributed to fees charged for the registration of horses and greyhounds for the Kansas Bred Registry Programs, application and licensee fees, and regulatory expenditures. The registration of horses was formerly administered by the Kansas Horsemen's Association but will now be done by KRG staff. Additionally, the greyhound registry is currently maintained by the Kansas Greyhound Association.

	Actual FY18	Actual FY19	Actual FY20	Actual FY21	Actual FY22	Actual FY23	Actual FY24	Actual FY25	Estimate FY26	Estimate FY27
Pari-mutuel Tax	-	-	-	-	-	-	-	-	-	-
Pari-mutuel Tax - Simulcast	-	-	-	-	-	-	-	-	-	-
Admissions Tax	-	-	-	-	-	-	-	-	-	-
Charges - Inspect, Examine, Audit	-	-	-	-	-	125,000	141,578	620,847	2,500,000	2,500,000
License Fee - Personal Service	-	-	-	-	-	-	-	-	-	-
License Fee - Business	758	188	-	-	-	-	-	-	-	-
License Fee - Other	-	-	-	-	-	-	-	-	-	-
Fines	1,300	-	1,723	1,075	1,649	-	-	-	1,000	1,000
Other Miscellaneous Revenue	-	-	-	-	-	-	-	-	-	-
Operating Transfer In	-	-	-	-	-	-	-	-	-	-
Operating Transfer Out	-	-	-	-	-	-	-	-	-	-
Total Receipts	2,058	188	1,723	1,075	1,649	125,000	141,578	620,847	2,501,000	2,501,000

## EXPLANATION OF RECEIPT ESTIMATES

### DA 405

DIVISION OF THE BUDGET  
STATE OF KANSAS

AGENCY NAME:

AGENCY--SUBAGENCY CODES:

PROGRAM TITLE AND CODE:

SUBPROGRAM TITLE AND CODE:

Kansas Racing and Gaming  
Commission

553-00

Racing Program - 03900

#### Horse Fair Racing Benefit Fund - 2296

K.S.A. 74-8838 states that one-third of the simulcast pari-mutuel tax be credited to the County Fair Horse Racing Benefit Fund. Moneys in the horse fair racing benefit fund shall be expended for the following fair meet associated costs: the commission's regulatory costs, tote board expenses, background investigations for fair association or associated non-profit organization's members, purse supplements, operating assistance grants, and the employment of key race officials. The only exception is that the statute allows 25% of moneys credited to the fund, on approval by the Commission, to be used for capital improvements to racetrack facilities.

K.S.A. 74-8826 division of funds generated from K.S.A. 74-8823(a)(5) will first be used to cover the expenses of KRGC related to parimutuel activities the remaining funds will be designated as follows 2/3 to the Horse Fair Racing Benefit Fund and 1/3 to the Kansas Horse Breeding Development Fund.

	Actual FY18	Actual FY19	Actual FY20	Actual FY21	Actual FY22	Actual FY23	Actual FY24	Actual FY25	Estimate FY26	Estimate FY27
Simulcast Pari-mutuel Tax	-	-	-	-	-	-	-	-	-	-
Operating Transfer In	-	-	-	-	-	-	-	-	-	-
Balance Transfer Out	-	-	-	-	-	-	-	-	-	-
	-	-	-	-	-	-	-	-	-	-

#### Racing Investigative Expense Fund - 2570

K.S.A. 74-8835 established the Racing Investigative Expense Fund and requires that all receipts other than the application fee received for licensure of facility owners or organizational licensees are to be deposited to the Racing Investigative Expense Fund. Moneys in the fund are to be used for expenses of investigation of an applicant's qualifications for an organization license, facility owner license or facility manager license.

This budget assumes there will be a single racetrack in Sedgwick County operating historical horse racing machines to generate revenues and expenditures to this fund in FY 2026, or FY 2027. The estimated revenues projected in FY 2065, and FY 2027 are attributed to fees charged for the investigation of an applicant's qualifications for an organization license, facility owner license or facility manager license.

	Actual FY18	Actual FY19	Actual FY20	Actual FY21	Actual FY22	Actual FY23	Actual FY24	Actual FY25	Estimate FY26	Estimate FY27
Reimbursed Backgrounding Fees	-	-	-	-	-	-	-	-	-	-
Balance Transfer Out	-	-	-	-	-	-	-	-	-	-
	-	-	-	-	-	-	-	-	-	-

## EXPLANATION OF RECEIPT ESTIMATES

DA 405

DIVISION OF THE BUDGET  
STATE OF KANSAS

AGENCY NAME:  
AGENCY--SUBAGENCY CODES:  
PROGRAM TITLE AND CODE:  
SUBPROGRAM TITLE AND CODE:

Kansas Racing and Gaming Commission  
553-00  
Racing Program - 03900

### Horse Breeding Development Fund - 2516

K.S.A. 74-8829 established the Horse Breeding Development Fund. Moneys credited to the Kansas horse breeding development fund must be proportionally categorized by various breeds of horses based upon participation in live races. Money from each category must be used to provide purse supplements, stakes and awards for Kansas-bred horses and research grants to Kansas regents institutions for equine research.

K.S.A. 74-8821 states all horse breakage proceeds be credited to the fund. K.S.A. 74-8767 directs 25% of the net gaming machine income from racetrack facilities deposited to the Live Horse Racing Purse Supplement Fund be transferred to this fund. K.S.A. 74-8826 stipulates that division of funds generated from K.S.A. 74-8823(a)(5) will first be used to cover the expenses of KRGC related to parimutuel activities the remaining funds will be designated as follows 2/3 to the Horse Fair Racing Benefit Fund and 1/3 to the Kansas Horse Beeding Development Fund.

**K.S.A. 74-8826 stipulates that funds generated by K.S.A. 74-8823(a)(5) will first be used to cover the expenses of KRGC related to parimutuel activities 1/3 of the remaining funds will be transferred to the Horse Breeding Development Fund. KRGC does not have an estimate of the revenue that will generated for the fund at this time.**

	Actual FY18	Actual FY19	Actual FY20	Actual FY21	Actual FY22	Actual FY23	Actual FY24	Actual FY25	Estimate FY26	Estimate FY27
Breakage	-	-	-	-	-	-	-	-	-	-
Unclaimed Winning Tickets	-	-	-	-	-	-	-	-	-	-
Other Misc Revenue	-	-	-	-	-	-	-	-	-	-
Operating Transfer In	-	-	-	-	-	-	-	-	-	-
Total	-	-	-	-	-	-	-	-	-	-

### Live Horse Racing Purse Supplement Fund - 2546

K.S.A. 74-8767 establishes the Live Horse Racing Purse Supplement Fund. The statute requires that 25% of moneys deposited to this fund be transferred to the Horse Breeding Development Fund. The remainder of the funds are to be distributed as purse supplements in accordance with rules and regulations adopted by the KRGC with recommendations by the official registering agency. K.S.A. 74-8747 directs 7% of the net gaming machine income from racetrack facilities, up to a maximum of \$3,750 per machine, be deposited to this fund.

This budget assumes there will be no revenue to, or expenditures from, this fund in FY 2026 or FY 2027. There has been no activity in this fund in previous years.

### Live Greyhound Racing Purse Supplement Fund - 2557

K.S.A. 74-8767 establishes the Live Greyhound Racing Purse Supplement Fund. The statute requires that 25% of the moneys deposited to this fund be transferred to the Greyhound Breeding Development Fund. The remainder of the funds are to be distributed as purse supplements in accordance with rules and regulations adopted by the KRGC with recommendations by the official registering agency. K.S.A. 74-8747 directs 7% of the net gaming machine income from racetrack facilities, up to a maximum of \$3,750 per machine, be deposited to this fund.

This budget assumes there will be no revenue to, or expenditures from, this fund in FY 2026, or FY 2027. There has been no activity in this fund in previous years.

## EXPLANATION OF RECEIPT ESTIMATES

**DA 405**

DIVISION OF THE BUDGET  
STATE OF KANSAS

AGENCY NAME:

AGENCY--SUBAGENCY CODES:

PROGRAM TITLE AND CODE:

SUBPROGRAM TITLE AND CODE:

Kansas Racing and Gaming  
Commission

553-00

Racing Program - 03900

### Racing Reimbursable Expense Fund - 2616

K.S.A. 74-8827 establishes the Racing Reimbursable Expense Fund and states all fees for processing fingerprints and reimbursements from licensees for the services of assistant animal health officers, stewards, and racing judges at racetrack facilities are to be credited to it.

This budget assumes there will be no revenue to, or expenditures from, this fund in FY26, or FY27. There has been no activity in this fund in previous years.

	Actual FY17	Actual FY18	Actual FY19	Actual FY20	Actual FY21	Actual FY22	Actual FY23	Actual FY24	Estimate FY25	Estimate FY26
Fingerprint Fees	-	-	-	-	-	-	-	-	-	-
Salary Reimbursements	-	-	-	-	-	-	-	-	-	-
Balance Transfer Out	-	-	-	-	-	-	-	-	-	-
	-	-	-	-	-	-	-	-	-	-

### Racing Applicant Deposit Fund - 7383

K.S.A. 74-8828 establishes the Racing Applicant Deposit Fund. K.S.A. 74-8815 directs the application deposit fee for a facility owner's license shall be credited to the Racing Applicant Deposit Fund with interest accruing monthly.

This budget assumes there will be a single racetrack in Sedgwick County operating historical horse racing machines to generate revenues and expenditures to this fund in FY 2026, or FY 2027. The estimated revenues projected in FY 2026, and FY 2027 are attributed to applicant deposits.

	Actual FY18	Actual FY19	Actual FY20	Actual FY21	Actual FY22	Actual FY23	Actual FY24	Actual FY25	Estimate FY26	Estimate FY27
Deposit	-	-	-	-	-	501,521	-	-	-	-

**EXPLANATION OF RECEIPT ESTIMATES****DA 405**DIVISION OF THE BUDGET  
STATE OF KANSAS

AGENCY NAME:

AGENCY--SUBAGENCY CODES:

PROGRAM TITLE AND CODE:

SUBPROGRAM TITLE AND CODE:

Kansas Racing and Gaming Commission

553-00

Racing Program - 03900

**Greyhound Breeding Development Fund - 2601**

K.S.A. 74-8831 established the Greyhound Breeding Development Fund and requires that all moneys credited to this fund be used only for the benefit of greyhounds. The statute directs moneys to be used as follows: 15% is credited to the greyhound tourism fund, 35% for research conducted within the state of Kansas relating to the prevention of injury to and disease of greyhounds; 50% for purse supplements, and an amount determined by the commission, but not to exceed \$30,000 is used to pay a portion of the administrative costs of the official registering agency.

K.S.A. 74-8822 states all monies from unclaimed winning ticket wagers on greyhounds be credited to this fund. K.S.A. 74-8767 directs 25% of the net gaming machine income from racetrack facilities deposited to the Live Greyhound Racing Purse Supplement Fund be transferred to this fund.

The remainder of the moneys in this fund at the end of FY 2013 were swept by the legislature at the beginning of FY 2014. This budget assumes that there will be no revenue to, or expenditures from this fund in FY 2026, or FY 2027.

	Actual FY18	Actual FY19	Actual FY20	Actual FY21	Actual FY22	Actual FY23	Actual FY24	Actual FY25	Estimate FY26	Estimate FY27
Other	-	-	-	-	-	-	-	-	-	-
Unclaimed Winning Tickets	-	-	-	-	-	-	-	-	-	-
Operating Transfers Out	-	-	-	-	-	-	-	-	-	-
Transfer Out (Swept by Legislature)	-	-	-	-	-	-	-	-	-	-
	-	-	-	-	-	-	-	-	-	-

**Greyhound Promotion and Development Fund - 2561**

K.S.A. 74-8842 creates the Greyhound Promotion and Development Fund and is funded through a voluntary greyhound purse check off program which provides for the deduction of 2% from all purses paid to kennels and greyhound owners who participate in the program. Greyhound owners and kennel operators are provided the opportunity annually not to participate in the program. Moneys deposited into the fund are distributed to the official greyhound registering agency and are to be used only for the development, promotion and representation of the greyhound industry in Kansas.

Language was included in the appropriations bill for the 2009 and 2010 legislative sessions that redirected the 15% transfer from the Greyhound Breeding Development Fund to the Greyhound Tourism Fund (in the Department of Commerce) to this fund.

The remainder of the moneys in this fund at the end of FY 2013 were swept by the legislature at the beginning of FY 2014. This budget assumes that there will be no revenue to, or expenditures from this fund in FY 2026, or FY 2027.

	Actual FY18	Actual FY19	Actual FY20	Actual FY21	Actual FY22	Actual FY23	Actual FY24	Actual FY25	Estimate FY26	Estimate FY27
Operating Transfer In	-	-	-	-	-	-	-	-	-	-
Other Misc Revenue	-	-	-	-	-	-	-	-	-	-
Transfer Out (Swept by Legislature)	-	-	-	-	-	-	-	-	-	-
	-	-	-	-	-	-	-	-	-	-

## EXPLANATION OF RECEIPT ESTIMATES

DA 405

DIVISION OF THE BUDGET  
STATE OF KANSAS

AGENCY NAME:

AGENCY--SUBAGENCY CODES:

PROGRAM TITLE AND CODE:

SUBPROGRAM TITLE AND CODE:

Kansas Racing and Gaming Commission

553

Expanded Gaming Program - 03800

### EXPANDED GAMING PROGRAM

#### Expanded Lottery Act Regulation Fund - 2535

The Kansas Expanded Lottery Act specifies that the cost of regulation is to be incurred by the lottery gaming facility managers. In 2007, the KRGC obtained a loan from the PMIB to finance expanded gaming regulation until the lottery gaming facility managers were selected and approved. During the 2008 legislative session, the amount of the loan from PMIB was increased to \$5,000,000 to cover KRGC operating costs for FY09 and FY10 and the term of the loan was extended through FY12. The balance of the loan was repaid in FY12.

Revenue projections for FY 2026 and FY 2027 include billings and payments from the currently operating casinos for the KRGC's direct and indirect costs associated with the operations of the Hollywood Casino, the Kansas Star Casino, the Boot Hill Casino, and the Kansas Crossing Casino. Payments are received in advance of expenditure on a quarterly billing cycle.

	Actual FY18	Actual FY19	Actual FY20	Actual FY21	Actual FY22	Actual FY23	Actual FY24	Actual FY25	Estimate FY26	Estimate FY27
PMIB Loan Proceeds	-	-	-	-	-	-	-	-	-	-
LGFRB applicant reimbursements	-	-	-	-	-	-	-	-	-	-
Hollywood Start-up Reimb.	-	-	-	-	-	-	-	-	-	-
Sumner Casino Start-up Reimb.	-	-	-	-	-	-	-	-	-	-
Boot Hill Start-up Reimb.	-	-	-	-	-	-	-	-	-	-
Hollywood Ops Reimbursement	1,807,405	1,754,182	1,368,001	2,364,914	1,856,409	2,315,520	2,321,425	2,248,652	2,010,000	2,770,000
Sumner Casino Ops Reimbursement	1,865,898	1,907,527	1,474,782	2,589,199	1,913,545	2,281,907	2,591,385	1,996,970	1,790,000	2,330,000
Boot Hill Ops Reimbursement	982,583	1,090,169	732,669	1,303,987	1,171,772	1,392,363	1,642,267	1,426,289	1,460,000	1,920,000
KS Crossing OPS Reimbursement	1,088,448	1,162,074	883,327	1,463,008	1,136,664	1,332,257	1,514,800	956,436	1,240,000	1,980,000
Administrative Costs Allocation Parimu	-	-	-	-	-	-	510,837	758,934	-	-
Facility Mgr. Background Deposits	-	-	-	-	-	-	-	-	-	-
Vendor Background Fees	-	-	-	-	-	-	-	-	-	-
Miscellaneous Revenue	388	4,695	35,806	1,231	3,827	1,007	31,284	(49,348)	-	-
Transfer In	-	-	-	-	-	-	375,000	375,000	375,000	375,000
Transfer Out	-	-	-	-	(16,098)	-	-	-	-	-
	5,744,722	5,918,647	4,494,585	7,722,339	6,066,119	7,323,054	8,986,998	7,712,933	6,875,000	9,375,000

## EXPLANATION OF RECEIPT ESTIMATES

DA 405

DIVISION OF THE BUDGET  
STATE OF KANSAS

AGENCY NAME: Kansas Racing and Gaming Commission  
AGENCY--SUBAGENCY CODES: 553  
PROGRAM TITLE AND CODE: Expanded Gaming Program - 03800  
SUBPROGRAM TITLE AND CODE:

### Gaming Background Investigations Fund - 2682

The Gaming Background Investigations Fund is established by appropriations act to be used for deposits by gaming and non-gaming vendors for background investigation costs. Expenses for backgrounds will be charged to this fund and tracked individually by project code for each vendor as each vendor is entitled to a refund of unspent deposits.

	Actual FY18	Actual FY19	Actual FY20	Actual FY21	Actual FY22	Actual FY23	Actual FY24	Actual FY25	Estimate FY26	Estimate FY27
Examination Deposits	138,652	175,742	130,155	279,316	329,115	426,736	323,294	516,996	300,000	400,000
Refunds	-	-	-	-	-	-	-	-	-	-
	138,652	175,742	130,155	279,316	329,115	426,736	323,294	516,996	300,000	400,000

### Education and Training Fund - 2459

The KRGC Education and Training Fee Fund is established by appropriations act and its purpose is to allow the KRGC to receive and expend funds for training opportunities that could be offered to others outside of the KRGC. This fund is not budgeted and is used only as training opportunities arise. In FY 2026 and FY 2027, time permitting, we plan to seek out training opportunities for in-house staff and to invite employees from other agencies to help offset our training costs.

### Illegal Gaming Enforcement Fund - 2734

The KRGC became the primary coordinator for state-level illegal gambling complaints after the passage of the Expanded Lottery Act, but no funds were appropriated for its activities. The Illegal Gaming Enforcement Fund was established during the 2011 legislative session and initial funding of \$5,000 was provided via a transfer from the state racing fund. A proviso was included that would allow KRGC the ability to retain funds seized as part of illegal gaming enforcement operations. For this budget submission we would again request that the proviso included for the FY15 appropriations act be retained for the FY2026, and FY 2027 appropriations.

(1) A proviso that would allow KRGC the ability to retain funds seized as part of illegal gaming enforcement operations and deposited into the fund to be used for illegal gaming enforcement activities.

(2) A proviso that would allow the KRGC to receive moneys from state or federal seizures or awards related to illegal gaming enforcement activities of the agency.

(3) The fund is a no-limit fund so that monies may be used in a timely manner for enforcement activities.

	Actual FY18	Actual FY19	Actual FY20	Actual FY21	Actual FY22	Actual FY23	Actual FY24	Actual FY25	Estimate FY26	Estimate FY27
Seizures	60	(919)	113,908	7,627	(13,493)	15,084	255	23,270	5,000	5,000
Transfers	-	-	-	-	-	-	-	-	-	-
	60	(919)	113,908	7,627	(13,493)	15,084	255	23,270	5,000	5,000

### Gaming Machine Examination Fund - 2998

KRGC requests that the Gaming Machine Examination Fund be re-established as a no-limit fee fund for the purpose of receiving certification fees from electronic gaming machine manufacturers to meet the requirements of K.S.A. 74-8750(c). All revenues received for the Gaming Machine Examination Fund will be from electronic gaming equipment manufacturers and any unused funds will be returned to the appropriate vendor.

	Actual FY18	Actual FY19	Actual FY20	Actual FY21	Actual FY22	Actual FY23	Actual FY24	Actual FY25	Estimate FY26	Estimate FY27
Gaming Machine Exam Deposits	-	-	-	-	-	-	-	-	-	-
	-	-	-	-	-	-	-	-	-	-



## NARRATIVE INFORMATION -- DA 400

DIVISION OF THE BUDGET  
STATE OF KANSAS

AGENCY NAME	Kansas Racing and Gaming Commission
AGENCY NUMBER	553
PROGRAM TITLE AND CODE	Parimutuel Gaming Program - 03900
SUBPROGRAM TITLE AND CODE	Racing Regulation

### PARIMUTUEL GAMING PROGRAM *Subprogram Racing Regulation*

#### Purpose:

The commission's primary purpose is to regulate the pari-mutuel industry through enforcement of the Kansas parimutuel racing act, K.S.A. 74-8801, et seq., and rules and regulations adopted by the commission. The commission also collects pari-mutuel taxes and promotes the pari-mutuel industry through the Kansas-bred development funds for horses and greyhounds and the horse fair racing benefit fund.

**Required By Statute:** Yes.

**Maintenance of Effort or Matching Requirement:** None.

**Statutory Requirements:** K.S.A. 74-8801 through 74-8842.

**Consequences of Not Funding:** Without this program there would be no regulatory oversight of pari-mutuel ownership and operations in Kansas including historical horse racing machines. Additionally, there would be no mechanism to protect the citizens of Kansas from the criminal element associated pari-mutuel activity or ensure integrity of pari-mutuel activity in Kansas. Currently, there are breeders of horses and greyhounds who continue to register their animals as Kansas bred. Not funding this program would result in their being no mechanism for these breeders to be able to register their animals as Kansas bred. The distinction can be important within the industry and not having this mechanism may have a negative impact on some breeders. Not funding this program would result in the loss of historical documents prior to their approved destruction.

#### PROGRAM'S STATUTORY HISTORY:

**K.S.A. 74-8804 (a)** through (q) require the commission to observe and inspect all racetrack facilities; administer oaths and take depositions; examine any books, paper records or memoranda of any licensee, racetrack or business involved in simulcasting races to racetrack facilities in Kansas; issue subpoenas; allocate race meeting dates, racing days, and hours to all organization licensees; authority to exclude, or cause to be expelled from any race meeting or racetrack facility or to prohibit a licensee from conducting business with any person who has violated the provision of this act or any rule and regulation or order of the commission, been convicted of a violation of the racing or gambling laws or has been adjudicated of committing as a juvenile an act which if committed by an adult, would constitute such a violation, whose person reflects adversely on the honesty and integrity of horse or greyhound racing or interferes with the conduct of a race meeting; review and approve all proposed construction and major renovations to racetrack facilities; review and approve all proposed contracts with racetracks or businesses involved in simulcasting races to racetrack facilities in Kansas; suspend a horse or greyhound from participation in races; impose a civil fine; adopt rules and regulations and require fingerprinting and background information of all persons for employment, license or simulcasting license.

#### PROGRAM GOAL

To maintain the integrity of pari-mutuel wagering systems and to protect the public and the health, safety and welfare of the racing animal. Ensure the integrity of pari-mutuel activity associated with historical horse racing machines.

**NARRATIVE INFORMATION -- DA 400**DIVISION OF THE BUDGET  
STATE OF KANSASAGENCY NAME  
AGENCY NUMBER  
PROGRAM TITLE AND CODE  
SUBPROGRAM TITLE AND CODEKansas Racing and Gaming Commission  
553  
Parimutuel Gaming Program - 03900**PARIMUTUEL GAMING PROGRAM****Salaries and Wages**

	<b>FY18 Actual</b>	<b>FY19 Actual</b>	<b>FY20 Actual</b>	<b>FY21 Actual</b>	<b>FY22 Actual</b>	<b>FY23 Actual</b>	<b>FY24 Actual</b>	<b>FY25 Actual</b>	<b>FY26 Estimate</b>	<b>FY27 Estimate</b>
State Racing Fund	1,406	342	1,388	2,826	3,274	34,078	114,415	160,653	1,799,733	1,809,578
Horse Fair Racing Benefit Fund	-	-	-	-	-	-	-	-	-	-
Racing Investigative Expense Fund	-	-	-	-	-	-	-	-	-	-
Racing Reimbursable Expense Fund	-	-	-	-	-	-	-	-	-	-
Total	1,406	342	1,388	2,826	3,274	34,078	114,415	160,653	1,799,733	1,809,578

**Prior Year FY 5**

In FY 2025 \$160,000 in salaries and wages were expended, primarily as the result of backgrounding and regulatory activities for the parimutuel facility in Sedgwick County.

**Current Year FY 2026**

The requested FTE for FY 2026 is increased by 6 FTE to distribute salary and wage central office costs to 19.05 for the regulation of a historical horse racing machines at a parimutuel facility in Sedgewick county. The 19.05 FTE are funded for a full year operations. The increase in FTE is mechanism to provide transparency of estimated central office salary and wage costs that should be allocated to the racing program to equitably show expenditure distributions no new positions are being added. KRGC has assumed a shrinkage of 7.5% which is about \$135,000.

**Budget Year FY 2027**

The requested number of FTE for FY 2027 is consistent with the revised budget request for FY 2026. The 19.05 FTE are funded for a full year operations. KRGC has assumed a shrinkage of 7.5% which is about \$135,000.

**Current Year FY 2026- Enhancement**

There are no salary and wages enhancements for the parimutuel program in the budget year.

**Budget Year FY 2027- Enhancement**

There are no salary and wages enhancements for the parimutuel program in FY 2027.

**NARRATIVE INFORMATION -- DA 400**DIVISION OF THE BUDGET  
STATE OF KANSASAGENCY NAME  
AGENCY NUMBER  
PROGRAM TITLE AND CODE  
SUBPROGRAM TITLE AND CODE

Kansas Racing and Gaming Commission

553

Parimutuel Gaming Program - 03900

**PARIMUTUEL GAMING PROGRAM****Contractual Service**

State Racing Fund	FY18 Actual	FY19 Actual	FY20 Actual	FY21 Actual	FY22 Actual	FY23 Actual	FY24 Actual	FY25 Actual	FY26 Estimate	FY27 Estimate
Communication	-	-	-	-	-	-	-	-	21,059	21,059
Freight & Express	-	-	-	-	-	-	-	-	48	48
Printing & Advertising	-	-	-	-	-	-	-	-	136	136
Rents	-	268	-	-	-	-	24,740	-	58,684	58,684
Repairing & Servicing	-	-	-	-	-	-	-	2,577	6,592	6,592
Travel & Subsistence	-	-	-	-	-	5,746	18,432	2,043	58,917	58,917
Fees - Other Services	-	-	-	-	-	3,841	48	536	195,478	195,478
Fees - Professional Services	-	-	-	-	-	8,640	-	-	113,328	113,328
Other Contractual Services	-	-	-	-	-	190	-	-	2,727	2,727
Total Contractual Services	-	268	-	-	-	18,417	43,220	5,156	456,970	456,970

**Prior Year FY 2025**

In FY 2025 approximately \$5,000 in contractual services were expended, primarily as the result of regulatory activities for the parimutuel facility in Sedgwick County.

**Current Year FY 2026**

Funds are budgeted for racing records storage and to operate the Kansas Bred Registry Program for registration of horses and greyhounds and to regulate a parimutuel facility in Sedgwick County. Contractual expenditures for FY 2026 have been increased by approximately \$135,000 by transferring those expenditures from the expanded lottery act regulation program to distribute central office expenditures appropriately. The increase in expenditures are not new expenditures but are necessary to appropriately allocate costs central office expenditures between programs.

**Budget Year FY 2027**

Funds are budgeted for racing records storage and to operate the Kansas Bred Registry Program for registration of horses and greyhounds and to regulate a parimutuel facility in Sedgwick County. Contractual expenditures for FY 2027 are consistent with the revised request for FY 2026.

**Current Year FY 2026- Enhancement**

There are no contractual expenditure enhancements for the parimutuel program in the budget year.

**Budget Year FY 2026- Enhancement**

There are no contractual expenditure enhancements for the parimutuel program in FY 2026.

**NARRATIVE INFORMATION -- DA 400**DIVISION OF THE BUDGET  
STATE OF KANSASAGENCY NAME  
AGENCY NUMBER  
PROGRAM TITLE AND CODE  
SUBPROGRAM TITLE AND CODE  
Kansas Racing and Gaming Commission  
553  
Parimutuel Gaming Program - 03900**PARIMUTUEL GAMING PROGRAM****Commodities****State Racing Fund**

	<b>FY18</b>	<b>FY19</b>	<b>FY20</b>	<b>FY21</b>	<b>FY22</b>	<b>FY23</b>	<b>FY24</b>	<b>FY25</b>	<b>FY26</b>	<b>FY27</b>
	<b>Actual</b>	<b>Actual</b>	<b>Actual</b>	<b>Actual</b>	<b>Actual</b>	<b>Actual</b>	<b>Actual</b>	<b>Actual</b>	<b>Estimate</b>	<b>Estimate</b>
Animal Food	-	-	-	-	-	-	-	-	-	-
Food	-	-	-	-	-	-	2,854	-	-	-
Maintenance Material, Supplies, Parts	-	-	-	-	-	-	-	-	472	472
Motor Vehicle Parts, Supplies	-	-	-	-	-	108	315	-	10,665	10,665
Professional & Scientific Supplies	-	-	-	-	-	-	-	23	15,146	15,146
Stationary & Office Supplies	-	-	-	-	-	-	-	72	16,249	16,249
Other Supplies, Materials, Parts	-	-	-	-	-	-	-	-	1,736	1,736
Total Commodities	-	-	-	-	-	108	3,169	95	44,267	44,267

**Prior Year FY 2025**

In FY 2025 approximately \$100 were expended for commodities primarily for fuel related to agency vehicle travel related to parimutuel activities.

**Current Year FY 2026**

The request for commodities for parimutuel activity is slightly increased above the FY 2026 approved budget by approximately \$8,000 to appropriately distribute a percentage of central office expenditures to the racing regulation program. The increase in costs are not new costs to the agency but an equitable distribution central office expenditures.

**Budget Year FY 2027**

The request for commodities for parimutuel activity in FY 2027 are consistent with the revised request FY 2026.

**Current Year FY 2026- Enhancement**

There are no commodities expenditure enhancements for the parimutuel program in the budget year.

**Budget Year FY 2027- Enhancement**

There are no commodities expenditure enhancements for the parimutuel program in FY 2027.

## NARRATIVE INFORMATION -- DA 400

DIVISION OF THE BUDGET  
STATE OF KANSAS

AGENCY NAME  
AGENCY NUMBER  
PROGRAM TITLE AND CODE  
SUBPROGRAM TITLE AND CODE

Kansas Racing and Gaming Commission  
553  
Parimutuel Gaming Program - 03900

### PARIMUTUEL GAMING PROGRAM

#### Capital Outlay

#### State Racing Fund

	FY18 Actual	FY19 Actual	FY20 Actual	FY21 Actual	FY22 Actual	FY23 Actual	FY24 Actual	FY25 Actual	FY26 Estimate	FY27 Estimate
Equipment, Machinery, Furniture and Fixtures	-	-	-	-	-	-	-	-	-	-
Books and Library Materials	-	-	-	-	-	-	-	-	-	-
Professional and Scientific Equipment	-	-	-	-	-	-	-	-	5,000	-
Microcomputer Systems and Support Equipment	-	-	-	-	-	-	-	7,059	47,696	33,848
Information Processing Equipment	-	-	-	-	-	-	-	-	60,000	10,000
Computer Systems, Info Processing or Micro Software	-	-	-	-	-	-	-	1,054	55,000	15,000
Other Equip Furniture/Fixtures	-	-	-	-	-	739	-	-	-	-
Passenger cars	-	-	-	-	-	-	-	-	-	-
Total Capital Outlay	-	-	-	-	-	739	-	8,113	167,696	58,848

#### Prior Year FY 2025

In FY 2025 \$8,000 were expended for capital outlay.

#### Current Year FY 2026

KRGC is requesting approximately \$150,000 in expenditures for capital outlay in FY 2026 for the regulation of historical horse racing machines at a parimutuel facility in Sedgwick County. This is an increase of \$100,000 over the approved fiscal year 2026 budget of \$50,000. Opening of the historical horsed racing (HHR) parimutuel facility in Sedgwick County is anticipated in December of 2025. The increase in capital outlay will cover costs for computers, fingerprint system, expansion of the backgrounding system, office equipment, for KRGC employees on property.

#### Budget Year FY 2027

KRGC is requesting approximately \$50,000 in expenditures for capital outlay in FY 2027 for the regulation of historical horse racing machines at a parimutuel facility in Sedgwick County.

#### Current Year FY 2026- Enhancement

KRGC has included an enhancement request for capital outlay for parimutuel operations for FY 2026 of \$100,000 for the anticipated December 2025 opening of an HHR parimutuel facility in Sedgwick County. The increase in capital outlay will cover costs for computers, fingerprint system, expansion of the backgrounding system, office equipment, for KRGC employees on property.

#### Budget Year FY 2027- Enhancement

There are no capital outlay enhancements for the parimutuel program in FY 2027.

AGENCY NAME	Kansas Racing and Gaming Commission
AGENCY NUMBER	553      FUNCTION NO.      1
PROGRAM TITLE AND CODE	Tribal Gaming Program - 03700
SUBPROGRAM TITLE AND CODE	

### **TRIBAL GAMING PROGRAM**

The Tribal Gaming Program fulfills the duties and obligations of the state as set forth in the tribal-state gaming compacts and the Tribal Gaming Oversight Act. There are four Native American tribes in Kansas which have approved tribal-state gaming compacts which have been approved by the Kansas legislature, signed by the Governor, and approved by the Bureau of Indian Affairs. These four nations are: the Iowa Tribe of Kansas and Nebraska; the Kickapoo Tribe of Kansas; the Prairie Band Potawatomi Nation; and the Sac & Fox Nation of Missouri in Kansas and Nebraska.

### **PROGRAM'S STATUTORY HISTORY:**

K.S.A. 74-9801 through 74-9809 (a) mandate the agency shall be responsible for oversight, monitoring and compliance of class III gaming conducted pursuant to tribal-state compacts. It is the responsibility of the agency to monitor compliance with tribal-state gaming compacts and perform the duties of the state gaming agency as provided for in the tribal-state gaming compacts. The agency may examine and inspect all tribal gaming facilities and facilities linked to Kansas tribal gaming facilities for gaming, including but not limited to all machines and equipment used for tribal gaming, books, papers, records, electronic records, computer records or surveillance and security tapes and logs of any tribal gaming facility. The executive director may issue subpoenas. The agency can review all licensing and disciplinary actions and reports of noncompliance with the tribal-state compacts. Enforcement agents are vested with the power and authority of law enforcement officers.

### **PROGRAM GOAL**

Ensure compliance with the four tribal-state compacts and the Tribal Gaming Oversight Act and that gaming is conducted in accordance with said compacts and applicable state and federal laws; protect the state of Kansas and its citizens from criminal activity in the tribal gaming arena; ensure accurate and complete information is provided to the different tribal gaming commissions for licensing purposes and to review all licensing decisions to ensure compliance; to conduct thorough background investigations on all gaming employees, management contractors, manufacturers and distributors of gaming devices seeking licensure at gaming facilities located in this state; investigate any alleged violations of the tribal-state compacts and the Tribal Gaming Oversight Act.

### **OBJECTIVES:**

Prohibit undesirable employees, contractors, manufacturers, and distributors from obtaining licenses and/or access to casino facilities and activities.

Ensure the provisions of the tribal-state gaming compacts, the Tribal Gaming Oversight Act, and the Indian Gaming Regulatory Act are met.

<div> <div>AGENCY NAME</div> <div>AGENCY NUMBER</div> <div>PROGRAM TITLE AND CODE</div> <div>SUBPROGRAM TITLE AND CODE</div> </div> <div> <div>Kansas Racing and Gaming Commission</div> <div>553</div> <div>Tribal Gaming Program - 03700</div> </div> <div> <div>FUNCTION NO.</div> <div>1</div> </div>					
<b>TRIBAL GAMING PROGRAM</b>					
<b><u>OUTCOME MEASURES:</u></b>					
	<b>FY23</b>	<b>FY24</b>	<b>FY25</b>	<b>FY26</b>	<b>FY27</b>
	<b>Actuals</b>	<b>Actuals</b>	<b>Actuals</b>	<b>Estimate</b>	<b>Estimate</b>
Average days to complete background investigations	30	35	34	34	34
Average days to preliminary suitability	3	1.5	1.79	2	2
<b><u>STRATEGIES:</u></b>					
Conduct all category I and category II background investigations with employees of the Tribal Gaming Program.					
Conduct investigations and inspections of the gaming operations.					
Conduct training of tribal gaming personnel on gaming operations.					
<b><u>OUTPUT MEASURES:</u></b>					
	<b>FY23</b>	<b>FY24</b>	<b>FY25</b>	<b>FY26</b>	<b>FY27</b>
	<b>Actuals</b>	<b>Actuals</b>	<b>Actuals</b>	<b>Estimate</b>	<b>Estimate</b>
Number of background investigations.	467	448	423	425	425
Number of official slot machine inspections	303	372	356	350	350
Number of compliance inspections	180	177	218	200	200
Number of internal control inspections	1,603	347	2,251	2,000	2,000

**NARRATIVE INFORMATION -- DA 400**

DIVISION OF THE BUDGET  
STATE OF KANSAS

AGENCY NAME  
AGENCY NUMBER  
PROGRAM TITLE AND CODE  
SUBPROGRAM TITLE AND CODE

Kansas Racing and Gaming Commission  
553  
Tribal Gaming Program - 03700

FUNCTION NO. 1

**TRIBAL GAMING PROGRAM****Salaries and Wages**

<b>Tribal Gaming Fund</b>	<b>FY 23</b>	<b>FY 24</b>	<b>FY 25</b>	<b>FY 26</b>	<b>FY 27</b>
	<b>Actuals</b>	<b>Actuals</b>	<b>Actuals</b>	<b>Estimate</b>	<b>Estimate</b>
Salaries and Wages	1,014,179	1,015,349	1,081,514	1,242,745	1,252,872
Assumed Shrinkage				(20,000)	(20,000)
Net Salaries and Wages				1,222,745	1,232,872

The Tribal Gaming Program funding request will be used to finance 14 FTE positions for FY 26 & FY 27.

The Tribal Gaming Program will be performing all the background investigations necessary for category I and category II employees, contractors, manufacturers, and distributors.

**Current Year FY 2026**

Salaries and Wages for the current year remain unchanged from the FY 26 legislative approved budgeted amount.

The Kansas State Gaming Agency has assumed a shrinkage amount of \$20,000, which equals a shrinkage rate of approximately 1.61%.

**Budget Year FY 2027**

Salaries and Wages for the budget years are to provide for a consistent level of employment.

The Kansas State Gaming Agency will assume a shrinkage amount of \$20,000, which equals a shrinkage rate of approximately 1.60%.

**Enhancement**

There are no Salaries and Wages enhancements for the Tribal Gaming Program in the budget year.



**NARRATIVE INFORMATION -- DA 400**

DIVISION OF THE BUDGET  
STATE OF KANSAS

AGENCY NAME  
AGENCY NUMBER  
PROGRAM TITLE AND CODE  
SUBPROGRAM TITLE AND CODE

Kansas Racing and Gaming Commission  
553                      FUNCTION NO.                      1  
Tribal Gaming Program - 03700

**TRIBAL GAMING PROGRAM****Contractual Services****Tribal Gaming Fund**

	<b>FY 24</b>	<b>FY 25</b>	<b>FY 26</b>	<b>FY 27</b>
	<b>Actuals</b>	<b>Actuals</b>	<b>Estimate</b>	<b>Estimate</b>
Communication	37,878	37,214	57,100	57,100
Freight & Express	-	-	100	100
Printing & Advertising	24	-	100	100
Rents	93,616	94,897	95,350	95,350
Repairing & Servicing	17,544	15,400	20,350	20,350
Travel & Subsistence	9,603	11,746	17,850	17,850
Fees - Record Checks, Building Surcharge	43,459	48,669	59,500	59,500
Fees - Other Services	29,662	29,178	34,700	34,700
Fees - Professional Services	-	29	50	50
Other Contractual Services	3,122	4,847	5,200	5,200
Official Hospitality	48	48	1,000	1,000
Total Contractual Services	<u>234,956</u>	<u>242,028</u>	<u>291,300</u>	<u>291,300</u>

**Prior Year FY 2025**

During FY 2025 Contractual Services were approximately 23.5% below the legislative approved budget. The tribes are given a credit for the amounts below the budget to the current year's assessments.

**Current Year FY 2026**

In the current year, the Contractual Services budget remains consistent with the FY 2026 legislative approved budgeted amount.

**Budget Year FY 2027**

In the budget year FY 2027, the Contractual Services budget remains consistent with the current year budget.  
Anticipated expenses were obtained through use of historical data, expected variations, and executive direction.

NOTE: The Tribal Gaming Program requests to continue the Hospitality Fund in the amount of \$1,000 for purpose of hosting meetings.

**Enhancement**

There are no Contractual Services enhancements for the Tribal Gaming Program in the budget year.

**NARRATIVE INFORMATION -- DA 400**

DIVISION OF THE BUDGET  
STATE OF KANSAS

AGENCY NAME  
AGENCY NUMBER  
PROGRAM TITLE AND CODE  
SUBPROGRAM TITLE AND CODE

Kansas Racing and Gaming Commission  
553      FUNCTION NO.  
Tribal Gaming Program - 03700

1

**Commodities****Tribal Gaming Fund**

	<b>FY24</b>	<b>FY25</b>	<b>FY26</b>	<b>FY27</b>
	<b>Actuals</b>	<b>Actuals</b>	<b>Estimate</b>	<b>Estimate</b>
Maintenance Materials, Supplies, Parts	245	104	1,050	1,050
Motor Vehicle Parts, Supplies	5,218	6,852	10,500	10,500
Professional & Scientific Supplies	113	-	500	500
Stationary & Office Supplies	998	582	1,500	1,500
Other Supplies, Materials, Parts	8,073	2,463	4,600	4,600
Total Commodities	<u>14,647</u>	<u>10,001</u>	<u>18,150</u>	<u>18,150</u>

**Prior Year FY 2025**

In FY 2025, Commodities were approximately 50.6% below the legislative approved budget. The tribes are given a credit for the amounts below the budget to the current year's assessments.

**Current Year FY 2026**

In the current year, the Commodities budget remains consistent with the FY 2026 legislative approved budgeted amount.

**Budget Year FY 2027**

In the budget year FY 2027, the Commodities budget remains consistent with the current year budget.

Anticipated expenses were obtained through use of historical data, expected variations, and executive direction.

**Enhancement**

There are no Commodities enhancements for the Tribal Gaming Program in the budget year.

**NARRATIVE INFORMATION -- DA 400**

DIVISION OF THE BUDGET  
STATE OF KANSAS

AGENCY NAME Kansas Racing and Gaming Commission  
AGENCY NUMBER 553 FUNCTION NO. 1  
PROGRAM TITLE AND CODE Tribal Gaming Program - 03700  
SUBPROGRAM TITLE AND CODE

**TRIBAL GAMING PROGRAM****Capital Outlay****Tribal Gaming Fund**

	<b>FY24</b>	<b>FY25</b>	<b>FY26</b>	<b>FY27</b>
	<b>Actuals</b>	<b>Actuals</b>	<b>Estimate</b>	<b>Estimate</b>
Vehicles	-	23,389	-	-
Equipment, Machinery, Furniture and Fixtures	-	1,245	1,000	1,000
Professional and Scientific Equipment	2,279	-	-	-
Books and Library Materials	-	-	-	-
Microcomputer Systems and Support Equipment	30,895	2,092	6,000	6,000
Information Processing Equipment	-	-	5,000	5,000
Computer Systems, Info Processing or Micro Software	274	400	500	500
Buildings & Improvements	-	-	-	-
Telecommunications/ Data Facilities	-	-	-	-
	<u>33,448</u>	<u>27,126</u>	<u>12,500</u>	<u>12,500</u>

**Prior Year FY 2025**

In the prior year, Capital Outlay was approximately 19.75% below the approved legislative budgeted amount. The tribes are given a credit for the amounts below the budget to the current year's assessments.

**Current Year FY 2026**

In the current year, the Capital Outlay budget remains consistent with the FY 2026 legislative approved budgeted amount.

**Budget Year FY 2027**

In the budget year FY 2027, the Capital Outlay budget remains consistent with the current year budget.

Anticipated expenses were obtained through use of historical data, expected variations and executive direction.

## NARRATIVE INFORMATION -- DA 400

DIVISION OF THE BUDGET  
STATE OF KANSAS

AGENCY NAME	Kansas Racing and Gaming Commission
AGENCY NUMBER	553
PROGRAM TITLE AND CODE	Expanded Gaming Regulation - 03800
SUBPROGRAM TITLE AND CODE	

### EXPANDED LOTTERY ACT REGULATION PROGRAM (GAMING)

The KRGC provides regulatory oversight of lottery and racetrack gaming facility managers and their operations in Kansas. Currently, no racetrack gaming facility managers are licensed in Kansas.

#### PROGRAM'S STATUTORY HISTORY:

Under KELA, the State of Kansas is authorized to contract with entities to operate casino-style games owned by the Kansas Lottery Commission. KELA established four gaming zones where lottery gaming facilities could be located and exclusively operated. Additionally, KELA provided that the Kansas Lottery Commission was authorized to contract with racetrack gaming facility managers in three of the four gaming zones to operate slots machines at pari-mutuel facilities.

K.S.A. 74-8772 requires the KRGC to establish and enforce rules and regulations that include but are not limited to: 1) promoting the integrity of gaming and the finances of gaming activity in Kansas that meet or exceed industry standards for monitoring and controlling lottery and racetrack gaming facility managers; 2) prescribing the on-site security at lottery and racetrack gaming facility enterprises in Kansas; 3) reporting of information concerning lottery and racetrack facility managers, their employees, vendors and vendor finances necessary or desirable to ensure the security of lottery or racetrack gaming facility operations; and 4) reporting and auditing of the financial information of lottery or racetrack gaming facility managers, and other information the KRGC requires to determine compliance with KELA and KRGC rules and regulations. KRGC rules and regulations shall include but not be limited to oversight provisions related to: 1) internal controls; 2) security of facilities; 3) performance of background investigations; 4) determination of qualifications and credentialing of employees, contractors and agents of lottery or racetrack gaming facility managers, ancillary lottery gaming facility operations and racetrack gaming facilities; 5) auditing of lottery gaming facility revenue and racetrack gaming facility slot machine income; 6) enforcement of all state laws; and 7) maintaining of the integrity of lottery and racetrack gaming facility operations.

K.S.A. 74-8769 requires that each person subject to a background check under KELA shall be subject to a state and national criminal history records check that conforms to federal standards for the purpose of verifying an applicant's identity and determining whether the applicant has been convicted of any crime that would disqualify the applicant from engaging in activities at lottery or racetrack gaming facilities or ancillary lottery gaming facilities.

K.S.A. 74-8710(a)(13)(B) states that the Kansas Lottery Commission must issue rules and regulations to enforce management contract provisions that require lottery and racetrack gaming facility managers to provide a program to alleviate problem gambling including a requirement that each lottery and racetrack gaming facility maintain a self-exclusion list by which individuals may exclude themselves from access to slots machines and other lottery facility games. Under K.S.A. 74-8772, the KRGC issues rules and regulations to provide regulatory oversight of these management contract provisions that include responsible gambling and voluntary exclusion programs.

K.S.A. 74-8750(c) requires the KRGC to collect from any manufacturer, supplier, provider, lottery gaming facility manager, racetrack gaming facility manager or other person the anticipated actual costs in advance for the examination and certification of electronic gaming machines or lottery facility games. KRGC will reimburse any overpayment and collect any under payment from the appropriate vendor.

## NARRATIVE INFORMATION -- DA 400

DIVISION OF THE BUDGET  
STATE OF KANSAS

AGENCY NAME	Kansas Racing and Gaming Commission
AGENCY NUMBER	553
PROGRAM TITLE AND CODE	Expanded Gaming Regulation - 03800
SUBPROGRAM TITLE AND CODE	

### EXPANDED LOTTERY ACT REGULATION PROGRAM (GAMING)

#### Key Performance Measures

	Actual FY 2020	Actual FY 2021	Actual FY 2022	Actual FY 2023	Actual FY 2024	Actual FY 2025	Estimate FY 2026	Estimate FY 2027
Number of background investigations completed (individual & corporate)	927	606	1,247	1,270	1,205	1,089	1,220	1,220
Percentage of employee licenses denied by the Commission	1%	1%	1%	1%	1%	2%	2%	2%
Number of initial EGM inspections/certifications	375	108	204	504	640	468	700	700
Number of Criminal Case Reports	409	457	340	258	289	528	550	550
Illegal gaming machines seized (# does not include components, prizes and other related items seized)	39	6	10	43	27	6	50	50
Illegal gambling complaints received	143	145	121	104	115	151	200	200
Local criminal prosecutions initiated with KRGC assistance*	0	0	5	0	4	6	25	25
Number of VEP enrollees granted access to lottery gaming facility	86	99	80	58	74	62	71	71
Number of new Voluntary Exclusion Program enrollments	200	174	172	192	499	714	675	675

\* Includes prosecutions where KRGC was appointed special counsel to prosecute as well as those where KRGC provided education, guidance, technical expertise, etc. to county or district attorneys that resulted in initiation of prosecutions. KRGC performs forensics for outside law enforcement agencies throughout the state, resulting in forfeitures and prosecutions that are not always disclosed to KRGC staff. KRGC does not have prosecution authority and it is unknown whether county and district attorneys initiated criminal cases based on KRGC efforts.

## NARRATIVE INFORMATION -- DA 400

DIVISION OF THE BUDGET  
STATE OF KANSAS

AGENCY NAME	Kansas Racing and Gaming Commission
AGENCY NUMBER	553
PROGRAM TITLE AND CODE	Expanded Gaming Regulation - 03800
SUBPROGRAM TITLE AND CODE	Gaming Regulation

### EXPANDED LOTTERY ACT REGULATION PROGRAM (GAMING)

#### *Subprogram Gaming Regulation*

#### Purpose:

Uphold and promote the integrity of gaming at lottery and racetrack gaming facilities. Ensure the state of Kansas is receiving its fair share of gaming revenue and patrons are receiving the gaming experience according to state law. Ensure compliance with KRGC rules and regulations and applicable state and federal laws.

**Required By Statute:** Yes.

**Maintenance of Effort or Matching Requirement:** None.

**Statutory Requirements:** K.S.A. 74-8733 through 74-8773.

**Consequences of Not Funding:** Without this program there would be no regulatory oversight of gaming ownership and operations in Kansas Casinos. There would be no protection for Kansas citizens from the nefarious influences of the criminal element that had such a large impact on the early years of gaming in the United States.

### PROGRAM GOALS - INTEGRITY OF GAMING

Uphold and promote the integrity of gaming at lottery and racetrack gaming facilities.

Protect gaming operations from the influence of individuals or entities seeking to harm the integrity of gaming in Kansas.

Protect the state of Kansas and its citizens from criminal activity and other potential issues related to the operation of lottery and racetrack gaming facilities.

#### Objectives

Conduct timely and thorough background investigations on all gaming licensees required by KELA.

Investigate complaints and alleged violations of the KRGC rules and regulations and state law related to the lottery and racetrack gaming facilities.

Prohibit ineligible applicants from obtaining licenses and access to casino facilities and activities.

#### OUTCOME MEASURE:

	Actual FY 2020	Actual FY 2021	Actual FY 2022	Actual FY 2023	Actual FY 2024	Actual FY 2025	Estimate FY 2026	Estimate FY 2027
Corporate Background Completion %	150%	100%	134%	117%	116%	95%	95%	95%
Individual Background Completion %	91%	67%	91%	129%	87%	87%	95%	95%
% of Employee Applicants Denied Temporary Permits	2%	2%	5%	4%	1%	4%	5%	5%
% Employee Licenses Denied by Commission	1%	0.5%	1%	1%	1%	2%	2%	2%
Licenses revoked because of previously undiscovered information	0%	0%	0%	0%	0%	0%	0%	0%

#### OUTPUT MEASURES:

Corporate Background Investigations:	Completed	6	0	7	41	25	12	20	20
	Pending/In-Process	63	77	59	33	13	56	60	60
	Updates/Renewals	26	23	36	23	34	30	60	60
Individual Background Investigations:	Completed	921	606	1,240	1,229	1,180	1,077	1,200	1,200
	Pending/In-Process	686	798	571	545	607	700	750	750
	Updates/Renewals	1,031	994	1,022	977	989	1,067	1,150	1,150
Vendor Licenses:	Approved	6	0	7	41	25	12	15	15
	Temporary	2	10	2	32	4	23	30	30
	Renewals	26	23	36	23	34	30	40	40
Casino Employee Licenses:	Gaming Licenses Approved	635	385	755	695	694	670	800	800
	Gaming Licenses Denied	18	6	22	19	29	48	50	50
	Temporary Work Permits Issues	555	637	909	700	796	790	800	800
	License Renewals	695	667	512	575	575	588	650	650
Criminal Case Reports		409	457	340	258	289	528	550	550

## NARRATIVE INFORMATION -- DA 400

DIVISION OF THE BUDGET  
STATE OF KANSAS

AGENCY NAME	Kansas Racing and Gaming Commission
AGENCY NUMBER	553
PROGRAM TITLE AND CODE	Expanded Gaming Regulation - 03800
SUBPROGRAM TITLE	Gaming Regulation

### EXPANDED LOTTERY ACT REGULATION PROGRAM (GAMING)

*Subprogram Gaming Regulation Continued*

#### PROGRAM GOALS - ACCOUNTABILITY & COMPLIANCE

Uphold and promote the integrity of gaming at lottery and racetrack gaming facilities.

Ensure the state of Kansas is receiving its fair share of gaming revenue and patrons are receiving the gaming experience according to state law.

Ensure compliance with KRGC rules and regulations and applicable state and federal laws.

#### Objectives

Certify all electronic gaming machines (EGM) and systems that will be used at lottery and racetrack gaming facilities in the State of Kansas.

Audit the collection of net gaming revenue.

Collect and analyze daily information on bets, wins, tickets, jackpots and drops from slots and daily table game totals.

Audit net gaming revenue by analyzing daily billings from the Lottery's central computer system and comparing it to each casino's management system.

Analyze reports on jackpot tax reporting, comps, e-promo's and customer deposits.

Audit the internal controls and procedures of each lottery gaming facility to ensure compliance with regulations and standards for operations.

Investigate complaints and alleged violations of the KRGC rules and regulations and applicable state and federal laws.

#### OUTCOME MEASURES:

Improper gaming outcome discovered after complaint

Actual FY 2020	Actual FY 2021	Actual FY 2022	Actual FY 2023	Actual FY 2024	Actual FY 2025	Estimate FY 2026	Estimate FY 2027
0	0	0	0	0	0	0	0

Improper payment to the state discovered after audit

0	0	0	0	0	0	0	0
---	---	---	---	---	---	---	---

Casino internal audits completed within allotted time

100%	100%	100%	100%	100%	100%	100%	100%
------	------	------	------	------	------	------	------

Customer Complaints Investigated

100%	100%	100%	100%	100%	100%	100%	100%
------	------	------	------	------	------	------	------

KRGC Responses to Customer Complaints

100%	100%	100%	100%	100%	100%	100%	100%
------	------	------	------	------	------	------	------

#### OUTPUT MEASURES:

EGM Disputes Investigated

17	14	10	6	8	15	15	15
----	----	----	---	---	----	----	----

Machine Software Inspections

2,280	1,721	4,201	4,566	4,123	4,747	5,000	5,000
-------	-------	-------	-------	-------	-------	-------	-------

Initial EGM Inspections/Certifications

375	108	204	504	640	468	700	700
-----	-----	-----	-----	-----	-----	-----	-----

EGM Hardware/Software Components Tested and Approved

2,683	1,706	1,626	2,177	3,237	4,168	3,600	3,600
-------	-------	-------	-------	-------	-------	-------	-------

Table Games Tested and Approved

3	2	1				5	5
---	---	---	--	--	--	---	---

Internal Control Plans Approved

0	0	0	0	0	0	0	0
---	---	---	---	---	---	---	---

Internal Control Plan Amendments Reviewed

60	46	68	58	65	57	75	75
----	----	----	----	----	----	----	----

Internal Control Plan Amendments Approved

55	34	56	36	32	43	65	65
----	----	----	----	----	----	----	----

Investigations of Variances/Findings found in Audits

2	0	0	0	0	0	0	0
---	---	---	---	---	---	---	---

Security Plans Approved

0	0	0	0	0	0	1	0
---	---	---	---	---	---	---	---

Security Plan Amendments Reviewed

2	2	9	2	2	3	5	5
---	---	---	---	---	---	---	---

Security Plan Amendments Approved

2	2	6	0	1	1	5	5
---	---	---	---	---	---	---	---

Non-Criminal Incident Reports

807	1,218	525	340	353	600	500	500
-----	-------	-----	-----	-----	-----	-----	-----

## NARRATIVE INFORMATION -- DA 400

DIVISION OF THE BUDGET  
STATE OF KANSAS

AGENCY NAME	Kansas Racing and Gaming Commission
AGENCY NUMBER	553
PROGRAM TITLE AND CODE	Expanded Gaming Regulation - 03800
SUBPROGRAM TITLE AND CODE	Illegal Gaming

### EXPANDED LOTTERY ACT REGULATION PROGRAM (GAMING) *Subprogram Illegal Gaming*

#### Purpose:

Protect the state of Kansas and its citizens from unregulated gaming.

**Required By Statute:** Yes.

**Maintenance of Effort or** None.

#### Matching Requirement:

**Statutory Requirements:** 74-8750(b)&(d); 74-8772(e); Appropriations language establishes the illegal gambling fund for machines seized through enforcement by KRGC.

**Consequences of Not Funding:** Failure to fund could result in the proliferation of gaming that is corrupt. It can also impact the gaming revenue the State receives.

### PROGRAM GOAL - ILLEGAL GAMING ENFORCEMENT

Coordinate with state agencies and local authorities to reduce and minimize illegal gaming in Kansas.

#### Objectives

Respond to inquiries and educate the public about illegal gambling.

Seek voluntary compliance from any business or individual in the state against whom there is an illegal gambling complaint.

Remove illegal gambling devices from public use through civil seizure and forfeiture when voluntary compliance is not possible.

Coordinate with local authorities to litigate issues that cannot be achieved through voluntary compliance or civil seizure.

	Actual FY 2020	Actual FY 2021	Actual FY 2022	Actual FY 2023	Actual FY 2024	Actual FY 2025	Estimate FY 2026	Estimate FY 2027
<b><u>OUTPUT MEASURES:</u></b>								
Illegal gaming machines seized (# does not include components, prizes and other related items seized)	39	6	10	43	27	6	50	50
Illegal gambling complaints received	143	145	121	104	115	151	200	200
Local criminal prosecutions initiated with KRGC assistance*	0	0	5	0	4	6	25	25
The number of investigations related to criminal activity as stipulated in K.S.A. § 74-8792(a)	0	0	0	0	25	155	150	150

\* Includes prosecutions where KRGC was appointed special counsel to prosecute as well as those where KRGC provided education, guidance, technical expertise, etc. to county or district attorneys that resulted in initiation of prosecutions. KRGC performs forensics for outside law enforcement agencies throughout the state, resulting in forfeitures and prosecutions that are not always disclosed to KRGC staff. KRGC does not have prosecution authority and it is unknown whether county and district attorneys initiated criminal cases based on KRGC efforts.



## NARRATIVE INFORMATION -- DA 400

DIVISION OF THE BUDGET  
STATE OF KANSAS

AGENCY NAME	Kansas Racing and Gaming Commission
AGENCY NUMBER	553
PROGRAM TITLE AND CODE	Expanded Gaming Regulation - 03800
SUBPROGRAM TITLE AND CODE	Responsible Gaming

### EXPANDED LOTTERY ACT REGULATION PROGRAM (GAMING) *Subprogram Responsible Gaming*

#### Purpose:

Facilitate responsible gaming in the State of Kansas by administering the voluntary exclusion program.

**Required By Statute:** Yes.

**Maintenance of Effort or** None.

**Matching Requirement:**

**Statutory Requirements:** K.S.A. 74-8733 through 74-8773.

**Consequences of Not Funding:** There would be no voluntary exclusion program for problem gamblers to sign up for and there would no longer be a state-wide mechanism to prevent problem gamblers from legally entering a State-owned casino.

### PROGRAM GOAL - RESPONSIBLE GAMBLING

Promote responsible gambling in the state of Kansas.

#### Objectives

Administer the Voluntary Exclusion Program (VEP).

Audit and approve each lottery gaming facility's responsible gambling plan for KRGK regulatory compliance.

Ensure all lottery gaming facility advertising satisfies KRGK regulations.

#### OUTCOME MEASURE:

Number of VEP enrollees granted access to lottery gaming facility

Actual FY 2020	Actual FY 2021	Actual FY 2022	Actual FY 2023	Actual FY 2024	Actual FY 2025	Estimate FY 2026	Estimate FY 2027
86	99	80	58	74	62	71	71

Number of audit deficiencies of lottery gaming facility's responsible gambling plan (initiated FY 2013)

0	0	0	0	0	0	0	0
---	---	---	---	---	---	---	---

Number of problem gambling helpline calls reporting lottery gaming facility as source (% of total)

14%	11%	37%	23%	42%	52%	50%	50%
-----	-----	-----	-----	-----	-----	-----	-----

#### OUTPUT MEASURES:

Number of new Voluntary Exclusion Program enrollments

200	174	172	192	499	714	675	675
-----	-----	-----	-----	-----	-----	-----	-----

## NARRATIVE INFORMATION -- DA 400

DIVISION OF THE BUDGET  
STATE OF KANSAS

AGENCY NAME Kansas Racing and Gaming Commission  
AGENCY NUMBER 553  
PROGRAM TITLE AND CODE Expanded Gaming Regulation - 03800  
SUBPROGRAM TITLE AND CODE

### EXPANDED GAMING REGULATION PROGRAM

#### Salaries and Wages

	FY17 Actual	FY18 Actual	FY19 Actual	FY20 Actual	FY21 Actual	FY22 Actual	FY23 Actual	FY24 Actual	FY25 Actual	FY26 Estimate	FY27 Estimate
<b>Gaming Regulation Sub-Program - 03861</b>											
Expanded Lottery Act Regulation Fund	4,425,473	4,784,630	4,960,509	5,151,087	5,128,709	5,369,133	5,961,686	6,334,729	6,802,073	7,555,909	7,589,691
Gaming Background Investigations Fund	167,533	170,982	201,735	179,014	261,078	338,903	331,836	303,628	338,558	424,956	428,878
<b>Subtotal Salaries and Wages - 03861</b>	<b>4,593,006</b>	<b>4,955,612</b>	<b>5,162,244</b>	<b>5,330,101</b>	<b>5,389,787</b>	<b>5,708,036</b>	<b>6,293,522</b>	<b>6,638,357</b>	<b>7,140,631</b>	<b>7,980,865</b>	<b>8,018,569</b>
<b>Responsible Gaming Sub-Program - 03862</b>											
Expanded Lottery Act Regulation Fund	-	2,031	39,597	30,882	29,162	35,562	35,934	49,871	49,871	32,047	32,358
Gaming Background Investigations Fund	-	-	-	-	-	-	-	-	-	-	-
<b>Subtotal Salaries and Wages - 03862</b>	<b>-</b>	<b>2,031</b>	<b>39,597</b>	<b>30,882</b>	<b>29,162</b>	<b>35,562</b>	<b>35,934</b>	<b>49,871</b>	<b>49,871</b>	<b>32,047</b>	<b>32,358</b>
<b>Illegal Gaming Sub-Program - 03863</b>											
Expanded Lottery Act Regulation Fund	81,429	81,429	76,611	82,557	57,305	51,715	89,912	274,167	274,167	638,864	642,497
Gaming Background Investigations Fund	-	-	-	-	-	-	-	-	-	-	-
<b>Subtotal Salaries and Wages - 03863</b>	<b>81,429</b>	<b>81,429</b>	<b>76,611</b>	<b>82,557</b>	<b>57,305</b>	<b>51,715</b>	<b>89,912</b>	<b>274,167</b>	<b>274,167</b>	<b>638,864</b>	<b>642,497</b>
<b>Expanded Gaming Regulation Program Total</b>											
Expanded Lottery Act Regulation Fund	4,506,902	4,868,090	5,076,717	5,264,526	5,215,176	5,456,410	6,087,532	6,658,767	7,126,111	8,226,820	8,264,546
Gaming Background Investigations Fund	167,533	170,982	201,735	179,014	261,078	338,903	331,836	303,628	338,558	424,956	428,878
<b>Total Salaries and Wages - Expanded Gaming Regulation Program</b>	<b>4,674,435</b>	<b>5,039,072</b>	<b>5,278,452</b>	<b>5,443,540</b>	<b>5,476,254</b>	<b>5,795,313</b>	<b>6,419,368</b>	<b>6,962,395</b>	<b>7,464,669</b>	<b>8,651,776</b>	<b>8,693,424</b>

#### Prior Year -FY 2025

Salaries for the prior year were for the KRGK's employees at the central office in Topeka, the Boot Hill Casino in Dodge City, the Kansas Star Casino in Mulvane, the Hollywood Casino at the Kansas Speedway in Wyandotte county, and the Kansas Crossing Casino in Crawford county. The KRGK had an approved FTE limit of 92.5. The FTEs consist of 11 regular classified positions and 81.5 regular unclassified positions. In addition, KRGK has 5 commissioners which are non-FTE temporary unclassified.

#### Current Year FY 2026

Salaries and wages for FY 2026 are for the KRGK employees that regulate gaming from the central office in Topeka, the Boot Hill Casino, the Kansas Star Casino, the Hollywood Casino, and the Kansas Crossing Casino. The KRGK has an approved FTE limit of 92.5 FTE positions for FY 2026. In addition, the KRGK funds a 0.5 temporary unclassified position, 5 KRGK Commissioners in the temporary unclassified service. The revised FTE for FY 2026 is reduced by 6 FTE and approximately \$500,000 of salary and wage expenditures from the central office are shifted to the racing regulation program to allocate expenditures equitably. The revised FTE total for the Expanded Gaming Regulation program is 86.5 FTE. KRGK has assumed a shrinkage of 7.5% which is about \$650,000.

#### Budget Year FY 2027

Salaries and wages for FY 2027 are for the KRGK employees that regulate gaming from the central office in Topeka, the Boot Hill Casino, the Kansas Star Casino, the Hollywood Casino, and the Kansas Crossing Casino. The KRGK has an approved FTE limit of 92.5 FTE positions for FY 2026. In addition, the KRGK funds a 0.5 temporary unclassified position, 5 KRGK Commissioners in the temporary unclassified service. KRGK's the requested 86.5 FTE is consistent with the revised FY 2026 budget request. KRGK has assumed a shrinkage of 7.5% which is about \$650,000.

#### Current Year FY 2026- Supplemental

There is no supplemental package for FY 2026.

#### Budget Year FY 2027- Supplemental

There is no supplemental package for FY 2027.

NARRATIVE INFORMATION -- DA 400										
										Kansas Racing and Gaming Commission
DIVISION OF THE BUDGET										553
STATE OF KANSAS										Expanded Gaming Regulation - 03800
EXPANDED GAMING REGULATION PROGRAM										
<u>Contractual Services</u>										
Contractual Services by Sub-Program										
	FY18	FY19	FY20	FY21	FY22	FY23	FY24	FY25	FY26	FY27
	Actual	Actual	Actual	Actual	Actual	Actual	Actual	Actual	Estimate	Estimate
<i>Gaming Regulation Sub-Program - 03861</i>										
<b>Expanded Lottery Act Reg Fund - 2535</b>										
Communication	79,494	62,571	64,043	80,408	81,224	66,332	62,762	29,240	74,141	74,141
Freight & Express	4,490	4,008	3,488	2,963	2,968	3,378	3,985	2,110	1,252	1,252
Printing & Advertising	-	45	842	46	131	1,489	3,368	166	1,314	1,314
Rents	215,597	232,254	223,794	227,867	227,045	230,156	241,639	262,320	222,466	222,466
Repairing & Servicing	20,846	20,901	109,664	15,242	14,219	18,275	25,043	29,295	49,116	49,116
Travel & Subsistence	89,902	67,729	75,366	38,344	57,843	79,439	86,573	97,870	132,717	132,717
Fees - Other Services	350,094	349,065	247,461	269,938	339,163	364,823	317,052	399,286	301,462	301,462
Fees - Professional Services	28,743	51,841	69,247	40,041	38,949	7,774	18,504	7,141	269,722	269,722
Other Contractual Services	4,123	2,675	3,026	7,981	8,383	10,699	6,754	17,740	16,316	16,316
<b>Subtotal - Cont. Services - ELARP</b>	<b>793,289</b>	<b>791,009</b>	<b>796,931</b>	<b>682,830</b>	<b>769,925</b>	<b>782,365</b>	<b>765,680</b>	<b>845,168</b>	<b>1,068,505</b>	<b>1,068,505</b>
<b>Gaming Background Investigations Fund - 2682</b>										
Communication	-	-	-	-	-	-	-	-	-	-
Freight & Express	-	-	-	-	-	-	-	-	-	-
Printing & Advertising	-	-	-	-	-	-	-	-	-	-
Rents	-	-	-	-	-	-	-	-	-	-
Repairing & Servicing	-	-	-	-	-	-	-	250	-	-
Travel & Subsistence	12,996	14,377	6,019	-	6,562	7,885	15,975	15,140	35,250	35,250
Fees - Other Services	5	321	142	-	-	-	1,255	1,805	-	-
Fees - Professional Services	-	-	-	-	-	-	134	805	-	-
Other Contractual Services	-	-	-	-	-	-	-	-	-	-
<b>Subtotal - Cont. Services - Gaming Background Invest. Fund</b>	<b>13,001</b>	<b>14,698</b>	<b>6,161</b>	<b>-</b>	<b>6,562</b>	<b>7,885</b>	<b>17,364</b>	<b>18,000</b>	<b>35,250</b>	<b>35,250</b>
<b>Illegal Gambling Enforcement Fund - 2734</b>										
Communication	-	-	-	-	-	-	-	-	-	-
Freight & Express	-	-	-	-	-	-	-	-	-	-
Printing & Advertising	-	-	-	-	-	-	-	-	-	-
Rents	-	-	-	-	-	-	-	-	-	-
Repairing & Servicing	-	-	-	-	-	-	-	-	-	-
Travel & Subsistence	-	-	-	-	-	-	-	-	-	-
Fees - Other Services	-	-	-	-	-	-	-	-	-	-
Fees - Professional Services	-	-	-	-	-	-	-	-	-	-
Other Contractual Services	-	-	-	-	-	-	-	-	-	-
<b>Subtotal - Cont. Services - Illegal Gambling Enforcement Fund</b>	<b>-</b>	<b>-</b>	<b>-</b>	<b>-</b>	<b>-</b>	<b>-</b>	<b>-</b>	<b>-</b>	<b>-</b>	<b>-</b>
<b>Subtotal - Cont. Services - Gaming Regulation 03861</b>	<b>806,290</b>	<b>805,707</b>	<b>803,092</b>	<b>682,830</b>	<b>776,487</b>	<b>790,250</b>	<b>783,044</b>	<b>863,168</b>	<b>1,103,755</b>	<b>1,103,755</b>
<i>Responsible Gaming Sub-Program - 03862</i>										
<b>Expanded Lottery Act Regulation Fund - 2535</b>										
<b>Subtotal - Cont. Services - ELARP</b>	<b>-</b>	<b>-</b>	<b>-</b>	<b>-</b>	<b>-</b>	<b>-</b>	<b>106</b>	<b>106</b>	<b>-</b>	<b>-</b>
<b>Gaming Background Investigations Fund</b>										
<b>Subtotal - Cont. Services - Gaming Background Invest. Fund</b>	<b>-</b>	<b>-</b>	<b>-</b>	<b>-</b>	<b>-</b>	<b>-</b>	<b>-</b>	<b>-</b>	<b>-</b>	<b>-</b>
<b>Illegal Gambling Enforcement Fund - 2734</b>										
<b>Subtotal - Cont. Services - Illegal Gambling Enforcement Fund</b>	<b>-</b>	<b>-</b>	<b>-</b>	<b>-</b>	<b>-</b>	<b>-</b>	<b>-</b>	<b>-</b>	<b>-</b>	<b>-</b>
<b>Subtotal Cont. Services - Responsible Gambling 03862</b>	<b>-</b>	<b>-</b>	<b>-</b>	<b>-</b>	<b>-</b>	<b>-</b>	<b>106</b>	<b>106</b>	<b>-</b>	<b>-</b>
<i>Illegal Gaming Sub-Program - 03863</i>										
<b>Expanded Lottery Act Reg Fund - 2535</b>										
Communication	-	-	-	-	-	-	34	8	20,000	20,000
Freight & Express	-	-	-	-	-	-	45	60	-	-
Printing & Advertising	-	-	-	-	-	-	-	-	-	-
Rents	-	-	200	-	-	-	-	-	-	-
Repairing & Servicing	-	-	-	47	-	92	-	156	-	-
Travel & Subsistence	150	198	477	1,194	1,421	3,665	6,794	7,826	25,000	25,000
Fees - Other Services	-	15	-	-	-	550	350	1,846	20,000	20,000
Fees - Professional Services	-	-	-	-	-	-	-	-	50,000	50,000
Other Contractual Services	-	-	-	-	-	-	383	-	-	-
<b>Subtotal - Cont. Services - ELARP</b>	<b>150</b>	<b>213</b>	<b>677</b>	<b>1,241</b>	<b>1,421</b>	<b>4,307</b>	<b>7,606</b>	<b>9,896</b>	<b>115,000</b>	<b>115,000</b>
<b>Illegal Gambling Enforcement Fund - 2734</b>										
Communication	-	240	-	-	-	-	-	-	-	-
Freight & Express	-	-	-	-	-	-	20	30	-	-
Printing & Advertising	-	-	-	-	-	-	-	985	-	-
Rents	-	-	780	-	-	-	-	-	-	-
Repairing & Servicing	-	-	70	-	-	-	-	-	-	-
Travel & Subsistence	207	1,206	-	-	-	-	-	-	-	-
Fees - Other Services	408	145	-	-	-	-	-	-	-	-
Fees - Professional Services	-	-	-	-	-	-	383	-	-	-
Other Contractual Services	-	221	116	70	-	362	-	390	3,000	3,000
<b>Subtotal - Cont. Services - Illegal Gambling Enforcement Fund</b>	<b>615</b>	<b>1,812</b>	<b>966</b>	<b>70</b>	<b>-</b>	<b>362</b>	<b>403</b>	<b>1,405</b>	<b>3,000</b>	<b>3,000</b>
<b>Subtotal - Cont. Services - Illegal Gaming 03863</b>	<b>765</b>	<b>2,025</b>	<b>1,643</b>	<b>1,311</b>	<b>1,421</b>	<b>4,669</b>	<b>8,009</b>	<b>11,301</b>	<b>118,000</b>	<b>118,000</b>
<b>Total Contractual Services - Expanded Gaming Regulation Program</b>	<b>807,055</b>	<b>807,812</b>	<b>804,735</b>	<b>684,141</b>	<b>777,908</b>	<b>794,919</b>	<b>791,159</b>	<b>874,875</b>	<b>1,221,755</b>	<b>1,221,755</b>
<u>Prior Year - FY 2025</u>										
The majority of contractual expenditures for FY 2025 are for the regulation of the four lottery gaming facilities currently operating. Expenses for central administration primarily consist of rent and monument charge (\$240,000) database fees related to background investigations (\$225,000).										
<u>Current Year - FY 2026</u>										
FY 2026 contractual services include expenditures for ongoing operations associated with the regulation of the Boot Hill Casino in Dodge City, the Hollywood Casino in Wyandotte county, the Kansas Star Casino near Mulvane, The Kansas Crossing Casino in Pittsburg, and regulatory costs related to the expansion of sports wagering. Travel and subsistence is for performing internal control audits at gaming facilities; voluntary exclusion program audits; electronic gaming equipment and security audits; background investigations of casino employees; agent and employee training; travel for the Commission; fees and professional services largely consisting of database access fees (i.e. KBI database) related to background checks for gaming facility employees. The majority of rental cost is Topeka office space and monument charge in the Eisenhower State Office Building. Costs from the Gaming Background Investigations fund are related to background checks of vendors who are providing goods and services to the gaming facilities. Contractual expenditures for the expanded lottery regulation program have been reduced by approximately \$135,000 by equitably allocating a percentage of central office expenditures to the racing regulation program.										
NOTE: The KRGC requests to continue the Hospitality Fund in the amount of \$1,500.										
<u>Enhancement - FY 2026</u>										
There are no contractual service enhancements for the Kansas Racing and Gaming Commission in the budget year.										

**NARRATIVE INFORMATION -- DA 400**

Kansas Racing and Gaming Commission

553

DIVISION OF THE BUDGET  
STATE OF KANSAS

Expanded Gaming Regulation - 03800

**EXPANDED GAMING REGULATION PROGRAM****Contractual Services (Continued)****Budget Year - FY 2027**

The FY 2027 budget year reflects costs for the ongoing expanded gaming regulation of the four operational lottery gaming facilities and are consistent with the FY 2026 revised budget request for contractual services

NOTE: The KRGC requests to continue the Hospitality Fund in the amount of \$1,500.

**Enhancement - FY 2027**

There are no contractual service enhancements for the Kansas Racing and Gaming Commission in the FY 2027 budget.

# NARRATIVE INFORMATION -- DA 400

DIVISION OF THE BUDGET  
STATE OF KANSAS

AGENCY NAME  
Kansas Racing and Gaming Commission  
AGENCY NUMBER  
553  
PROGRAM TITLE AND CODE  
Expanded Gaming Regulation - 03800  
SUBPROGRAM TITLE AND CODE

## EXPANDED GAMING REGULATION PROGRAM

### Commodities

#### Commodities by Sub-Program

	FY18	FY19	FY20	FY21	FY22	FY23	FY24	FY25	FY26	FY27
	Actual	Actual	Actual	Actual	Actual	Actual	Actual	Actual	Estimate	Estimate
<b>Gaming Regulation Sub-Program - 03861</b>										
<b>Expanded Lottery Act Reg Fund -2535</b>										
Clothing	13	3,928	11,131	647	-	210	638	-	-	-
Food	55	32	514	-	59	72	341	920	-	-
Maintenance Materials, Supplies, Parts	8,215	3,891	7,694	553	7,784	3,915	948	2,574	3,828	3,828
Motor Vehicle Parts, Supplies	7,453	10,967	-	8,352	11,567	12,559	19,310	16,602	25,390	25,390
Professional & Scientific Supplies	4,061	793	3,535	3,908	2,883	1,101	2,068	3,589	23,514	23,514
Stationary & Office Supplies	10,933	21,312	13,828	9,986	10,892	16,437	30,317	17,538	80,306	80,306
Other Supplies, Materials, Parts	34,087	24,036	9,671	4,581	27,401	28,485	24,845	37,279	3,964	3,964
<b>Subtotal - Commodities - ELARF</b>	<b>64,817</b>	<b>64,959</b>	<b>46,373</b>	<b>28,027</b>	<b>60,586</b>	<b>62,779</b>	<b>78,467</b>	<b>78,502</b>	<b>137,003</b>	<b>137,003</b>
<b>Gaming Background Investigations Fund - 2682</b>										
Maintenance Materials, Supplies, Parts	-	-	-	-	-	-	-	-	-	-
Motor Vehicle Parts, Supplies	249	504	-	-	164	-	178	182	1,700	1,700
Professional & Scientific Supplies	-	-	139	-	-	-	-	-	-	-
Stationary & Office Supplies	-	-	-	-	-	-	-	-	-	-
Other Supplies and Materials	-	-	-	-	-	-	-	-	-	-
<b>Subtotal - Commodities - Gaming Background Investigations Fund</b>	<b>249</b>	<b>504</b>	<b>139</b>	<b>-</b>	<b>164</b>	<b>-</b>	<b>178</b>	<b>182</b>	<b>1,700</b>	<b>1,700</b>
<b>Illegal Gambling Enforcement Fund - 2734</b>										
<b>Subtotal - Commodities - Illegal Gambling Enforcement Fund</b>	<b>-</b>	<b>-</b>	<b>-</b>	<b>-</b>	<b>-</b>	<b>-</b>	<b>-</b>	<b>-</b>	<b>-</b>	<b>-</b>
<b>Subtotal - Commodities - Gaming Regulation</b>	<b>65,066</b>	<b>65,463</b>	<b>46,512</b>	<b>28,027</b>	<b>60,750</b>	<b>62,779</b>	<b>78,645</b>	<b>78,684</b>	<b>138,703</b>	<b>138,703</b>
<b>Responsible Gaming Sub-Program - 03862</b>										
<b>Expanded Lottery Act Regulation Fund - 2535</b>										
<b>Subtotal - Commodities - ELARF</b>	<b>-</b>	<b>-</b>	<b>-</b>	<b>-</b>	<b>-</b>	<b>-</b>	<b>-</b>	<b>-</b>	<b>-</b>	<b>-</b>
<b>Gaming Background Investigations Fund</b>										
<b>Subtotal - Commodities - Gaming Background Investigations Fund</b>	<b>-</b>	<b>-</b>	<b>-</b>	<b>-</b>	<b>-</b>	<b>-</b>	<b>-</b>	<b>-</b>	<b>-</b>	<b>-</b>
<b>Illegal Gambling Enforcement Fund - 2734</b>										
<b>Subtotal - Commodities - Illegal Gambling Enforcement Fund</b>	<b>-</b>	<b>-</b>	<b>-</b>	<b>-</b>	<b>-</b>	<b>-</b>	<b>-</b>	<b>-</b>	<b>-</b>	<b>-</b>
<b>Subtotal Commodities - Responsible Gambling 03862</b>	<b>-</b>	<b>-</b>	<b>-</b>	<b>-</b>	<b>-</b>	<b>-</b>	<b>-</b>	<b>-</b>	<b>-</b>	<b>-</b>
<b>Illegal Gaming Sub-Program - 03863</b>										
<b>Expanded Lottery Act Regulation Fund - 2535</b>										
Food	-	-	-	-	-	179	-	-	-	-
Clothing	-	-	-	-	-	-	109	109	-	-
Maintenance Materials, Supplies, Parts	-	-	-	-	-	-	41	41	-	-
Motor Vehicle Parts, Supplies	639	371	297	613	350	1,349	2,342	2,342	1,200	1,200
Professional & Scientific Supplies	-	-	-	-	918	-	-	-	20,000	20,000
Stationary & Office Supplies	-	-	-	-	-	-	95	95	10,000	10,000
Other Supplies and Materials	136	-	207	-	326	-	333	333	-	-
<b>Subtotal - Commodities - ELARF</b>	<b>775</b>	<b>371</b>	<b>504</b>	<b>613</b>	<b>1,594</b>	<b>1,349</b>	<b>2,920</b>	<b>2,920</b>	<b>31,200</b>	<b>31,200</b>
<b>Illegal Gambling Enforcement Fund - 2734</b>										
Maintenance Materials, Supplies, Parts	-	-	-	-	-	-	-	-	-	-
Motor Vehicle Parts, Supplies	722	580	238	-	-	-	-	-	1,200	1,200
Professional & Scientific Supplies	-	-	-	-	-	-	-	-	-	-
Stationary & Office Supplies	-	65	240	-	-	91	49	-	-	-
Other Supplies and Materials	-	16	-	-	-	-	16	-	-	-
<b>Subtotal - Commodities - Illegal Gambling Enforcement Fund</b>	<b>722</b>	<b>661</b>	<b>478</b>	<b>-</b>	<b>-</b>	<b>91</b>	<b>65</b>	<b>-</b>	<b>1,200</b>	<b>1,200</b>
<b>Subtotal - Commodities - Illegal Gambling - 03863</b>	<b>1,497</b>	<b>1,032</b>	<b>982</b>	<b>613</b>	<b>1,594</b>	<b>1,440</b>	<b>2,985</b>	<b>2,920</b>	<b>32,400</b>	<b>32,400</b>
<b>Total Commodities - Expanded Gaming Regulation Program</b>	<b>66,563</b>	<b>66,495</b>	<b>47,494</b>	<b>28,640</b>	<b>62,344</b>	<b>64,219</b>	<b>81,630</b>	<b>81,604</b>	<b>171,103</b>	<b>171,103</b>

### Prior Year - FY 2025

The FY 2025 reflects costs associated with the regulation of expanded gaming for the Topeka office, the Boot Hill Casino in Ford county, Hollywood Casino in Wyandotte county, Kansas Star Casino in Sumner county, and Kansas Crossing Casino in Crawford county. Major categories of supplies include materials for repair of office equipment; supplies and materials for repair and maintenance of state vehicles (e.g. oil changes, tires) and fuel charges for state vehicles; professional and scientific supplies for law enforcement materials (e.g. hand guns, ammunition, EGM testing supplies), legal directories and security tags for gaming machines; office supplies for the Topeka, Boot Hill Casino, Kansas Star Casino, Hollywood Casino, and Kansas Crossing Casino KRGCC offices. Office supplies include security badge supplies for the printing and replacement of security badges for gaming facility employees.

### Current Year - FY 2026

The FY 2026 commodities budget reflects costs associated with the regulation of expanded gaming for the Topeka, the Boot Hill Casino, the Hollywood Casino, the Kansas Star Casino, and the Kansas Crossing Casino KRGCC offices and is slightly reduced from the FY 2026 approved budget by approximately \$8,000 to equitably allocate a percentage of central office expenditures to the racing regulation program.

### Enhancement - FY 2026

There are no commodity enhancements for the Kansas Racing and Gaming Commission in the budget year.

<b>NARRATIVE INFORMATION -- DA 400</b>		AGENCY NAME	Kansas Racing and Gaming Commission
		AGENCY NUMBER	553
DIVISION OF THE BUDGET		PROGRAM TITLE AND CODE	Expanded Gaming Regulation - 03800
STATE OF KANSAS		SUBPROGRAM TITLE AND CODE	
<p><b>EXPANDED GAMING REGULATION PROGRAM</b></p> <p><u><b>Commodities (Continued)</b></u></p> <p><u><b>Budget Year - FY 2027</b></u></p> <p>The FY 2027 commodities budget reflects costs associated with the regulation of expanded gaming for the Topeka, the Boot Hill Casino, the Hollywood Casino, the Kansas Star Casino, and the Kansas Crossing Casino KRGC offices and is consistent with the revised budget request for FY 2026.</p> <p><u><b>Enhancement - FY 2027</b></u></p> <p>There are no commodity enhancements for the Kansas Racing and Gaming Commission in the budget year.</p>			

# NARRATIVE INFORMATION -- DA 400

DIVISION OF THE BUDGET  
STATE OF KANSAS

AGENCY NAME Kansas Racing and Gaming Commission  
AGENCY NUMBER 553  
PROGRAM TITLE AND CODE Expanded Gaming Regulation - 03800  
SUBPROGRAM TITLE AND CODE

## EXPANDED GAMING REGULATION PROGRAM

### Capital Outlay

#### Capital Outlay by Sub-Program

	FY18 Actual	FY19 Actual	FY20 Actual	FY21 Actual	FY22 Actual	FY23 Actual	FY24 Actual	FY25 Actual	FY26 Estimate	FY27 Estimate
<b>Gaming Regulation Sub-Program - 03861</b>										
<b>Expanded Lottery Act Reg Fund - 2535</b>										
Passenger Cars	-	53,240	-	-	-	-	78,852	-	-	-
Equipment, Machinery, Furniture and Fixtures	5,101	3,428	-	3,679	10,487	5,500	6,553	71,489	5,500	5,500
Professional and Scientific Equipment	239	311	292	709	1,797	-	809	299	-	-
Books and Library Materials	-	-	-	-	150	-	1,992	95	-	-
Microcomputer Systems and Support Equipment	30,427	-	-	21,650	92,700	85,300	11,949	30,339	76,452	76,452
Information Processing Equipment	525	44,593	15,190	66,653	40,302	15,000	36,005	8,463	15,000	15,000
Computer Systems, Info Processing or Micro Software	18,501	-	60,796	38,722	36,179	49,500	33,684	24,053	49,500	49,500
Telecommunications/ Data Facilities	-	-	-	-	-	-	-	1,516	-	-
Building Improvements Non Cap	-	-	9,450	-	915	-	4,760	-	-	-
<b>Subtotal - Capital Outlay - ELARF</b>	<b>54,793</b>	<b>101,572</b>	<b>85,728</b>	<b>131,413</b>	<b>182,530</b>	<b>155,300</b>	<b>174,604</b>	<b>136,254</b>	<b>146,452</b>	<b>146,452</b>
<b>Gaming Background Investigations Fund - 2682</b>	-	-	-	-	-	-	-	-	-	-
<b>Subtotal - Capital Outlay - Gaming Background Investigations Fund</b>	-	-	-	-	-	-	-	-	-	-
<b>Subtotal - Capital Outlay - 03861</b>	<b>54,793</b>	<b>101,572</b>	<b>85,728</b>	<b>131,413</b>	<b>182,530</b>	<b>155,300</b>	<b>174,604</b>	<b>136,254</b>	<b>146,452</b>	<b>146,452</b>
<b>Responsible Gaming Sub-Program - 03862</b>										
<b>Expanded Lottery Act Reg Fund - 2535</b>	-	-	-	-	-	-	-	-	-	-
<b>Subtotal - Capital Outlay - ELARF</b>	-	-	-	-	-	-	-	-	-	-
<b>Gaming Background Investigations Fund - 2682</b>	-	-	-	-	-	-	-	-	-	-
<b>Subtotal - Capital Outlay - Gaming Background Investigations Fund</b>	-	-	-	-	-	-	-	-	-	-
<b>Subtotal Capital Outlay - 03862</b>	-	-	-	-	-	-	-	-	-	-
<b>Illegal Gaming Sub-Program - 03863</b>										
<b>Expanded Lottery Act Reg Fund - 2535</b>	-	-	-	-	-	-	856	59	5,000	5,000
Professional and Scientific Equipment	-	76	259	-	-	-	1,489	-	-	-
Information Processing Equipment	-	-	-	-	-	-	4,358	-	-	-
Equipment, Machinery, Furniture and Fixtures	-	-	-	-	-	-	-	-	-	-
<b>Subtotal - Capital Outlay - ELARF</b>	-	<b>76</b>	<b>259</b>	-	-	-	<b>6,703</b>	<b>59</b>	<b>5,000</b>	<b>5,000</b>
<b>Illegal Gambling Enforcement Fund - 2734</b>	-	-	2,405	-	-	61,333	2,058	4,231	-	-
<b>Subtotal - Capital Outlay - Illegal Gambling Fund</b>	-	-	<b>2,405</b>	-	-	<b>61,333</b>	<b>2,058</b>	<b>4,231</b>	-	-
<b>Subtotal Capital Outlay - 03863</b>	-	<b>76</b>	<b>2,664</b>	-	-	<b>61,333</b>	<b>8,761</b>	<b>4,290</b>	<b>5,000</b>	<b>5,000</b>
<b>Total Capital Outlay - Expanded Gaming Regulation Program</b>	<b>54,793</b>	<b>101,648</b>	<b>88,392</b>	<b>131,413</b>	<b>182,530</b>	<b>216,633</b>	<b>183,365</b>	<b>140,544</b>	<b>151,452</b>	<b>151,452</b>

### Prior Year - FY2025

The FY2025 expenses for capital outlay include replacement of older computer workstations and related software, replacement of servers, replacement of firewalls, and updated security protocols. Capital outlay purchases also included the renewal of licensing software.

### Current Year - FY 2026

The FY 2026 budget year reflects continued costs associated with the regulation of gaming for the Topeka office and the KRGC offices located at each of the four lottery gaming facilities. Expenditures include scheduled replacement computer workstations; scheduled server replacement; gaming test equipment; and other miscellaneous hardware and is slightly reduced from the FY 2026 approved budget by approximately \$8,000 to equitably allocate a percentage of central office expenditures to the parimutuel gaming program.

### Enhancement - FY 2026

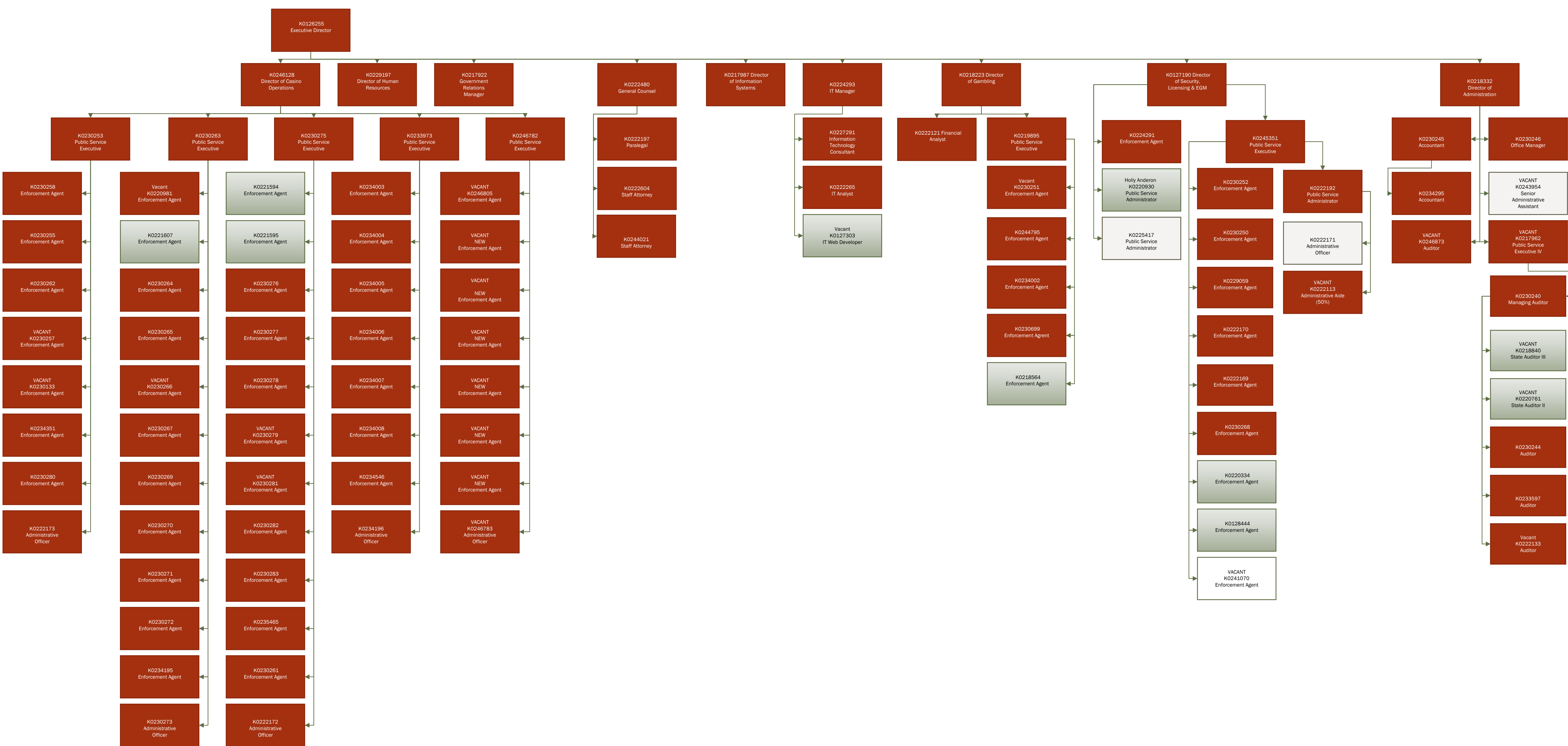
There are no capital outlay enhancements for the Kansas Racing and Gaming Commission in the budget year.

### Budget Year - FY 2027

The FY 2027 budget year reflects continued costs associated with the regulation of gaming for the Topeka office and the KRGC offices located at each of the four lottery gaming facilities. Expenditures include scheduled replacement computer workstations; scheduled server replacement; gaming test equipment; and other miscellaneous hardware. The fiscal year 2027 capitol outlay budget request is consistent with the revised budget request for FY 2026.

### Enhancement - FY 2027

There are no capital outlay enhancements for the Kansas Racing and Gaming Commission in the budget year.



Legend





# Fiscal Years 2026 and 2027

