



1999 N. Amidon, Suite 350  
Wichita, KS 67203

Phone: (316) 832-9906  
Fax: (316) 832-9679  
Email: [dschroeder@kscpost.org](mailto:dschroeder@kscpost.org)  
[www.kscpost.org](http://www.kscpost.org)

Doug Schroeder, Executive

Laura Kelly, Governor

August 31, 2023

Mr. Adam Proffitt, Director  
Division of the Budget  
900 SW Jackson, Suite 504-N  
Landon State Office Building  
Topeka, Kansas 66612

Director Proffitt:

As Executive Director of the Kansas Commission on Peace Officers' Standards and Training (KS-CPOST), I hereby submit for your consideration the KS-CPOST Fiscal Year 2025 budget request. It has been prepared in accordance with Division of Budget instructions. To the best of my knowledge and belief, the information and explanations included in this budget request are correct and complete.

As always, my staff and I are prepared to provide any additional information which you may require.

Sincerely,

A handwritten signature in blue ink, appearing to read "DS", written over a horizontal line.

Doug Schroeder  
Executive Director  
KSCPOST

Cc: Cheri Froetschner, Principal Analyst, Kansas Division of the Budget  
Shirley Morrow, Principal Fiscal Analyst, Kansas Legislative Research Department

**Narrative Information—DA 400**

Division of the Budget

State of Kansas

Agency KSCPOST #529

Program Operations

**PROGRAM MISSION:**

The Kansas Commission on Peace Officers' Standards and Training (KSCPOST) is committed to providing the citizens of Kansas with qualified, trained, ethical, competent, and professional peace officers. It is also dedicated to adopting and enforcing professional standards for certification of peace officers to promote public safety and preserve public trust and confidence.

**PROGRAM OVERVIEW:**

The Kansas Commission on Peace Officers' Standards and Training is responsible for regulating and professionalizing law enforcement in Kansas. As such, the philosophy embedded in the KSCPOST is summarized by its motto: "Integritatis Ac Veritates Defensores" or "Defenders of Integrity and Truth."

The 2006 Legislature approved the creation of the Kansas Commission on Peace Officers' Standards and Training (K.S.A. 2008 Supp. 74-5603 and 74-5606). Funding for the agency is provided through court docket fees. KSCPOST began operations in FY 2008 in Hutchinson, Kansas, where one employee was provided a temporary office in the Kansas Law Enforcement Training Center. The KSCPOST moved operations to a permanent location in Wichita, Kansas and currently employs 6 FTE and 2 Part-time Employees. The Commission Board consists of a 12-member body appointed by the governor.

Kansas Commission on Peace Officers' Standards and Training (KSCPOST) operations support our program mission. The KSCPOST is responsible for regulating the law enforcement profession in Kansas pursuant to the Kansas Law Enforcement Training Act, K.S.A. 74-5601 et seq. The Commission adopts and enforces rules and regulations that are necessary to ensure that law enforcement officers are adequately trained and certified. The Commission has been taxed to establish and maintain a Central Registry of all Kansas law enforcement officers, their training records and employment history. The Central Registry is relied upon by approximately 400+ Kansas law enforcement agencies and 8300+ Kansas law enforcement officers. As a result of the administrative investigations, the Commission may suspend, revoke, or deny the certification of a law enforcement officer. The Commission may also publicly censure, reprimand, condition, or place a law enforcement officer on probation.

**Narrative Information—DA 400**

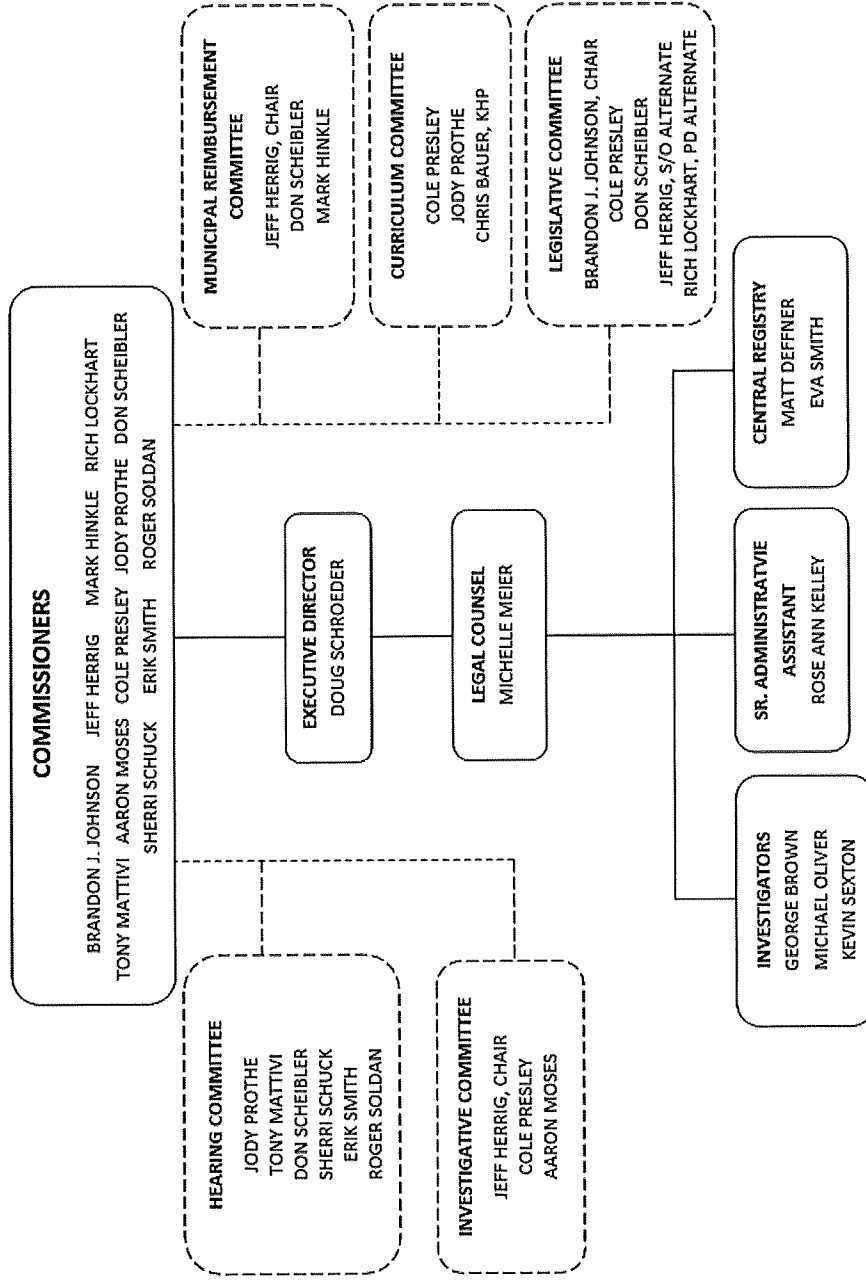
Division of the Budget

State of Kansas

Agency KSCPOST #529

Program Operations

**PROGRAM ORGANIZATIONAL CHART:**



August 29, 2023

## Narrative Information—DA 400

Division of the Budget

State of Kansas

Agency KSCPOST #529

Program Operations

### PROGRAM STATISTICS:

|   | FY2020        | FY 2021        | FY2022        | FY2023        |
|---|---------------|----------------|---------------|---------------|
| Central Registry                                      |               |                |               |               |
| Demographic Forms Processed                           | 1155          | 1339           | 1406          | 1314          |
| Number of Officers Certified                          | 602           | 605            | 610           | 616           |
| Provisional Licenses Issued                           | 698           | 788            | 826           | 734           |
| Status Change Forms Processed                         | 1616          | 1780           | 2241          | 1964          |
| Agency Information Requests Received                  | 441           | 416            | 461           | 554           |
| Agency Requests Filled                                | 467           | 424            | 466           | 553           |
| KORA Requests Received                                | 55            | 49             | 67            | 92            |
| <u>Investigations</u>                                 | <u>FY2020</u> | <u>FY 2021</u> | <u>FY2022</u> | <u>FY2023</u> |
| Termination or Separation with Training Act Violation | 79            | 89             | 96            | 94            |
| Cases Presented to Investigative Committee            | 106           | 144            | 141           | 130           |
| Number of Delinquent Officers (training hours)        | 108           | 115            | 110           | 110           |
| Extensions  | 54            | 64             | 68            | 48            |
| Modifications or Waivers                              | 2             | 14             | 17            | 11            |
| Investigations  | 6             | 5              | 6             | 5*            |
| Complaints  | 162           | 133            | 175           | 198           |
| Certification Actions                                 | 45            | 43             | 57            | 47            |
| Biased Based Policing Referrals from KSAG             | 11            | 11             | 5             | 4             |
| Administrative Hearings                               | 3             | 5              | 4             | 8             |

\*Indicates currently incomplete data

**Narrative Information—DA 400**

Division of the Budget  
State of Kansas

Agency KSCPOST #529

Program Operations

**PERFORMANCE MEASURES:**

|   | Goal | FY 2020<br>Actuals | FY 2021<br>Actuals | FY 2022<br>Actuals | FY 2023<br>Est. | FY 2023<br>Actuals | FY 2024<br>Est. | FY 2025<br>Est. | 3-yr. Avg. |
|---|------|--------------------|--------------------|--------------------|-----------------|--------------------|-----------------|-----------------|------------|
| 1. Percentage of Agency Information Requests Filled                             | 100  | 105.9%             | 100.9%             | 100.0%             | 100.0%          | 99.8%              | 100.0%          | 100.0%          | 102.3%     |
| 2. Percentage of Officers Certified Per Provisional License Issued              |      | 86.2%              | 76.8%              | 73.8%              | 72.0%           | 83.9%              | 72.0%           | 78.0%           | 78.9%      |
| <i>Output Measures</i>  |      |                    |                    |                    |                 |                    |                 |                 |            |
| 4. Number of Investigations Presented to the Commission Investigative Committee |      | 106                | 144                | 141                | 145             | 130                | 150             | 160             | 130        |
| 5. Number of Certification Actions Taken  |      | 45                 | 43                 | 57                 | 55              | 47                 | 57              | 57              | 48         |
| 6. Number of Demographic Forms Processed  |      | 1155               | 1339               | 1406               | 1350            | 1314               | 1350            | 1350            | 1300       |

**Narrative Information—DA 400**

Division of the Budget  
State of Kansas

Agency KSCPOST #529

Program Operations

**EXPENDITURE JUSTIFICATION:**

Salaries and Wages

Summary: As in FY23, the number of POST employees is expected to stay at 6 FTE and two part-time employees. Due to changes in employee benefits and salary increases, FY24 is budgeted at \$607,009 and FY25 is budgeted at \$603,202.

|               |            |
|---------------|------------|
| FY23 actual   | \$ 564,545 |
| FY24 budgeted | \$ 607,009 |
| FY25 budgeted | \$ 603,202 |

Contractual Services

Summary: Contractual services have seen a small increase due to the increased inflation rate.

|               |            |
|---------------|------------|
| FY23 actual   | \$ 171,135 |
| FY24 budgeted | \$ 209,350 |
| FY24 budgeted | \$ 213,450 |

Commodities

Summary: Although commodities are a relatively small expenditure for the POST annually, it has been affected by the significant raise in inflation and expanded future needs.

|               |           |
|---------------|-----------|
| FY23 actual   | \$ 12,653 |
| FY24 budgeted | \$ 21,200 |
| FY25 budgeted | \$ 21,500 |

**Narrative Information—DA 400**

Division of the Budget

State of Kansas

Agency KSCPOST #529

Program Operations

Capital Outlay

Summary: KSCPOST received a 40k budget enhancement in FY23 to increase the capacity and security of the Central Registry database. The Central Registry catalogs training and employment records for nearly 8,300 police officers each year. Each officer is required to get 40 hours of continued education annually.

FY24 budgeted \$138,000 which includes 100k for physical security and safety measures such as controlled entry/egress, video monitoring, and ballistic materials. The current leased office space is in a high crime area of Wichita. There have been attempts to break into our office this past year and there currently are no barriers between staff and violent intruders. These needed security upgrades will not only protect staff but also secure our technological infrastructure as well as our records. We hope to have the physical upgrades completed by January 2024.

FY25 budget reflects the physical security work completion and thus a reduction in budget. Capital Outlay for FY25 will support on-going Central Registry updates, maintenance, and improvements.

|               |            |
|---------------|------------|
| FY23 actual   | \$ 73,364  |
| FY24 budgeted | \$ 138,000 |
| FY25 budgeted | \$ 44,500  |

Aid to Locals

Summary: The Local Law Enforcement Training Reimbursement Fund (#2583) is a separate pass-through fund in the KSCPOST budget and is used to reimburse municipal agencies for personnel sent to the law enforcement academy per K.S.A. 74-5620. The Local Law Enforcement Training Reimbursement Fund receives revenue from a \$1 docket fee on municipal court cases. Municipal docket fees have continued to decline for the past 7 years prior to a slight increase in FY23. The Local Law Enforcement Training Reimbursement Fund received \$155,583 in FY20, \$139,066.63 in FY21, \$130,541 in FY22 and \$137,118 in FY23 from municipal court docket fees. The Local Law Enforcement Training Reimbursement is a pass-through fund with no discretionary spending authority by KSCPOST. Due to this fund being fee based on docket fees, FY24 and FY25 are budgeted for the same amount as the FY23 actual.

|               |           |
|---------------|-----------|
| FY22 actual   | \$137,118 |
| FY23 budgeted | \$137,118 |
| FY24 budgeted | \$137,118 |

**Narrative Information—DA 400**

Division of the Budget

State of Kansas

Agency KSCPOST #529

Program Operations

**FINAL BUDGET SUMMARY from IBARS:**

Total FY23 actual expenditures \$ 952,238  
 FY24 budgeted expenditures \$ 1,106,100  
 FY25 budgeted expenditures \$ 1,019,770

|  | FY 2023 Actuals | FY 2024 Posted Payroll | FY 2024 Base Budget Entry | FY 2024 Base Budget Request | FY 2024 Agency Change Packages | FY 2024 Adjusted Budget Request | FY 2025 Posted Payroll | FY 2025 Base Budget Entry | FY 2025 Base Budget Request | FY 2025 Agency Change Packages | FY 2025 Adjusted Budget Request |
|--|-----------------|------------------------|---------------------------|-----------------------------|--------------------------------|---------------------------------|------------------------|---------------------------|-----------------------------|--------------------------------|---------------------------------|
| <u>1 Salaries and Wages</u>                | 564,545         | 607,009                | 0                         | 607,009                     | 0                              | 607,009                         | 603,202                | 0                         | 603,202                     | 0                              | 603,202                         |
| <u>2 Contractual Services</u>              | 171,135         | 0                      | 209,350                   | 209,350                     | 0                              | 209,350                         | 0                      | 213,450                   | 213,450                     | 0                              | 213,450                         |
| <u>3 Commodities</u>                       | 12,653          | 0                      | 21,200                    | 21,200                      | 0                              | 21,200                          | 0                      | 21,500                    | 21,500                      | 0                              | 21,500                          |
| <u>4 Capital Outlay</u>                    | 73,364          | 0                      | 138,000                   | 138,000                     | 0                              | 138,000                         | 0                      | 44,500                    | 44,500                      | 0                              | 44,500                          |
| <u>8 Aid to Locals</u>                     | 130,541         | 0                      | 130,541                   | 130,541                     | 0                              | 130,541                         | 0                      | 137,118                   | 137,118                     | 0                              | 137,118                         |
| <b>Total Expenditures</b>                  | <b>952,238</b>  | <b>607,009</b>         | <b>499,091</b>            | <b>1,106,100</b>            | <b>0</b>                       | <b>1,106,100</b>                | <b>603,202</b>         | <b>416,568</b>            | <b>1,019,770</b>            | <b>0</b>                       | <b>1,019,770</b>                |
| <u>2583 KS COMM PEACE OFF STDS/TRN.FD</u>  | 821,697         | 607,009                | 368,550                   | 975,559                     | 0                              | 975,559                         | 603,202                | 279,450                   | 882,652                     | 0                              | 882,652                         |
| <u>2746 LOCAL LAW ENFCMT TRNG REIMB.FD</u> | 130,541         | 0                      | 130,541                   | 130,541                     | 0                              | 130,541                         | 0                      | 137,118                   | 137,118                     | 0                              | 137,118                         |
| <b>Total Funds</b>                         | <b>952,238</b>  | <b>607,009</b>         | <b>499,091</b>            | <b>1,106,100</b>            | <b>0</b>                       | <b>1,106,100</b>                | <b>603,202</b>         | <b>416,568</b>            | <b>1,019,770</b>            | <b>0</b>                       | <b>1,019,770</b>                |

End of Report